

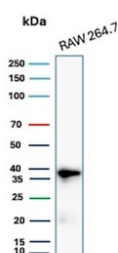
## Recombinant Cyclin D1 Antibody [clone rCCND1/4752] (V8652)

Catalog No.	Formulation	Size
V8652-100UG	0.2 mg/ml in 1X PBS with 0.1 mg/ml BSA (US sourced) and 0.05% sodium azide	100 ug
V8652-20UG	0.2 mg/ml in 1X PBS with 0.1 mg/ml BSA (US sourced) and 0.05% sodium azide	20 ug
V8652SAF-100UG	1 mg/ml in 1X PBS; BSA free, sodium azide free	100 ug

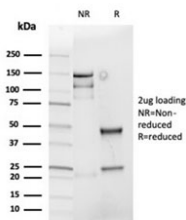
Recombinant **MOUSE MONOCLONAL**

[Bulk quote request](#)

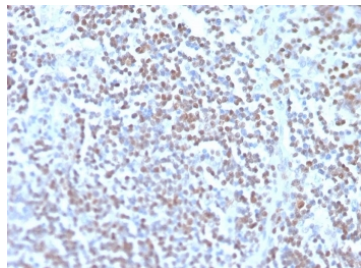
Availability	1-3 business days
Species Reactivity	Human
Format	Purified
Host	Mouse
Clonality	Recombinant Mouse Monoclonal
Isotype	Mouse IgG2a, kappa
Clone Name	rCCND1/4752
Purity	Protein G affinity chromatography
UniProt	P24385
Localization	Nuclear
Applications	Immunohistochemistry (FFPE) : 1-2ug/ml for 30 min at RT Western Blot : 2-4ug/ml
Limitations	This recombinant Cyclin D1 antibody is available for research use only.



Western blot testing of mouse RAW264.7 cell lysate with recombinant Cyclin D1 antibody. Predicted molecular weight: 32-36 kDa.



SDS-PAGE analysis of purified, BSA-free recombinant Cyclin D1 antibody (clone rCCND1/4752) as confirmation of integrity and purity.



IHC staining of FFPE human mantle cell carcinoma with recombinant Cyclin D1 antibody (clone rCCND1/4752). HIER: boil tissue sections in pH 9 10mM Tris with 1mM EDTA for 20 min and allow to cool before testing.

## Description

Recognizes a protein of 36kDa, identified as cyclin D1. Cyclin D1, one of the key cell cycle regulators, is a putative proto-oncogene overexpressed in a wide variety of human neoplasms. This antibody neutralizes the activity of cyclin D1 in vivo. About 60% of mantle cell lymphomas (MCL) contain a t(11; 14)(q13; q32) translocation resulting in over-expression of cyclin D1. This antibody is useful in identifying mantle cell lymphomas (cyclin D1 positive) from CLL/SLL and follicular lymphomas (cyclin D1 negative). Occasionally, hairy cell leukemia and plasma cell myeloma weakly express Cyclin D1.

## Application Notes

Optimal dilution of the recombinant Cyclin D1 antibody should be determined by the researcher.

## Immunogen

A portion of amino acids 200-295 from the human protein was used as the immunogen for the recombinant Cyclin D1 antibody.

## Storage

Store the recombinant Cyclin D1 antibody at 2-8°C (with azide) or aliquot and store at -20°C or colder (without azide).