

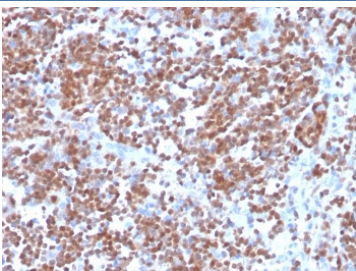
Recombinant Cyclin D1 Antibody [clone CCND1/3370R] (V8651)

Catalog No.	Formulation	Size
V8651-100UG	0.2 mg/ml in 1X PBS with 0.1 mg/ml BSA (US sourced) and 0.05% sodium azide	100 ug
V8651-20UG	0.2 mg/ml in 1X PBS with 0.1 mg/ml BSA (US sourced) and 0.05% sodium azide	20 ug
V8651SAF-100UG	1 mg/ml in 1X PBS; BSA free, sodium azide free	100 ug

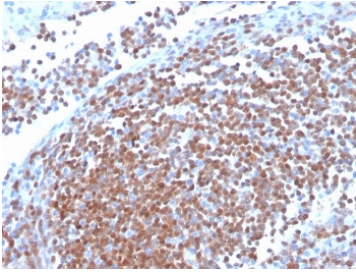
Recombinant **RABBIT MONOCLONAL**

[Bulk quote request](#)

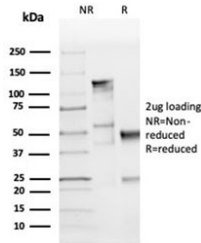
Availability	1-3 business days
Species Reactivity	Human
Format	Purified
Host	Rabbit
Clonality	Recombinant Rabbit Monoclonal
Isotype	Rabbit IgG
Clone Name	CCND1/3370R
Purity	Protein A affinity chromatography
UniProt	P24385
Localization	Nuclear
Applications	Immunohistochemistry (FFPE) : 1-2ug/ml for 30 min at RT Western Blot : 2-4ug/ml
Limitations	This recombinant Cyclin D1 antibody is available for research use only.



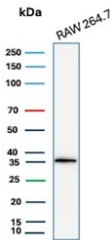
IHC staining of FFPE human mantle cell carcinoma with recombinant Cyclin D1 antibody (clone CCND1/3370R). HIER: boil tissue sections in pH 9 10mM Tris with 1mM EDTA for 20 min and allow to cool before testing.



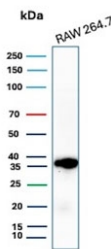
IHC staining of FFPE human mantle cell carcinoma with recombinant Cyclin D1 antibody (clone CCND1/3370R). HIER: boil tissue sections in pH 9 10mM Tris with 1mM EDTA for 20 min and allow to cool before testing.



SDS-PAGE analysis of purified, BSA-free recombinant Cyclin D1 antibody (clone CCND1/3370R) as confirmation of integrity and purity.



Western blot testing of mouse RAW264.7 cell lysate with recombinant Cyclin D1 antibody. Predicted molecular weight: 32-36 kDa.



Western blot testing of mouse RAW264.7 cell lysate with recombinant Cyclin D1 antibody. Predicted molecular weight: 32-36 kDa.

Description

Recognizes a protein of 36kDa, identified as cyclin D1. Cyclin D1, one of the key cell cycle regulators, is a putative proto-oncogene overexpressed in a wide variety of human neoplasms. This antibody neutralizes the activity of cyclin D1 in vivo. About 60% of mantle cell lymphomas (MCL) contain a t(11; 14)(q13; q32) translocation resulting in over-expression of cyclin D1. This antibody is useful in identifying mantle cell lymphomas (cyclin D1 positive) from CLL/SLL and follicular lymphomas (cyclin D1 negative). Occasionally, hairy cell leukemia and plasma cell myeloma weakly express Cyclin D1.

Application Notes

Optimal dilution of the recombinant Cyclin D1 antibody should be determined by the researcher.

Immunogen

A portion of amino acids 270-295 fro the human protein was used as the immunogen for the recombinant Cyclin D1 antibody.

Storage

Store the recombinant Cyclin D1 antibody at 2-8oC (with azide) or aliquot and store at -20oC or colder (without azide).

