

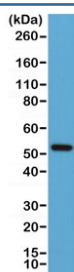
Recombinant Cyclin B1 Antibody [clone RM281] (R20298)

Catalog No.	Formulation	Size
R20298-0.1ML	Antibody in PBS with 50% glycerol, 1% BSA and 0.09% sodium azide	100 ul

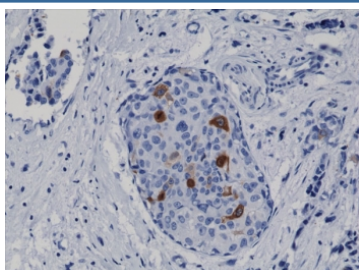
Recombinant **RABBIT MONOCLONAL**

[Bulk quote request](#)

Availability	1-3 business days
Species Reactivity	Human
Format	Purified
Clonality	Recombinant Rabbit Monoclonal
Isotype	Rabbit IgG
Clone Name	RM281
Purity	Protein A purified from animal origin-free supernatant
UniProt	P14635
Gene ID	891
Localization	Cytoplasmic, nuclear
Applications	Immunohistochemistry (FFPE) : 1:1000-1:2000 (1) Western Blot : 1:1000-1:2000
Limitations	This recombinant Cyclin B1 antibody is available for research use only.



Western blot of human Jurkat lysate using recombinant Cyclin B1 antibody at 1:1000.
Predicted molecular weight: 48-60 kDa.



IHC testing of FFPE human breast cancer tissue with recombinant Cyclin B1 antibody at 1:2000.

Description

This recombinant Cyclin B1 antibody reacts to human Cyclin B1.

Application Notes

The stated application concentrations are suggested starting points. Titration of the recombinant Cyclin B1 antibody may be required due to differences in protocols and secondary/substrate sensitivity.

1. A pH6 Citrate buffer or pH9 Tris/EDTA buffer HIER step is recommended for testing of FFPE tissue sections.

Immunogen

A peptide corresponding to Cyclin B1 was used as the immunogen for this recombinant Cyclin B1 antibody.

Storage

Store the recombinant Cyclin B1 antibody at -20oC (with glycerol) or aliquot and store at -20oC (without glycerol).