

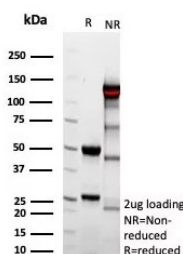
## Recombinant Complement 4d Antibody / C4d [clone C4D/9213R] (V5455)

Catalog No.	Formulation	Size
V5455-100UG	0.2 mg/ml in 1X PBS with 0.1 mg/ml BSA (US sourced), 0.05% sodium azide	100 ug
V5455-20UG	0.2 mg/ml in 1X PBS with 0.1 mg/ml BSA (US sourced), 0.05% sodium azide	20 ug
V5455SAF-100UG	1 mg/ml in 1X PBS; BSA free, sodium azide free	100 ug

Recombinant **RABBIT MONOCLONAL**

[Bulk quote request](#)

<b>Availability</b>	1-3 business days
<b>Species Reactivity</b>	Human
<b>Format</b>	Purified
<b>Clonality</b>	Recombinant Rabbit Monoclonal
<b>Isotype</b>	Rabbit IgG, kappa
<b>Clone Name</b>	C4D/9213R
<b>Purity</b>	Protein A/G affinity
<b>UniProt</b>	P0C0L4, P0C0L5
<b>Localization</b>	Cytoplasm
<b>Applications</b>	Immunohistochemistry (FFPE) : 1-2ug/ml
<b>Limitations</b>	This recombinant Complement 4d antibody is available for research use only.



SDS-PAGE analysis of purified, BSA-free recombinant Complement 4d antibody (clone C4D/9213R) as confirmation of integrity and purity.

### Description

This MAb is specific to Complement 4d (C4d) and reacts with the secreted as well as cell-bound C4d. C4d is a degradation product of the activated complement factor C4b. Complement 4b is typically activated by binding of Abs to specific target molecules. Following activation and degradation of the C4 molecule, thio-ester groups are exposed, which allow transient, covalent binding of the degradation product Complement 4d to endothelial cell surfaces and extracellular

matrix components of vascular basement membranes near the sites of C4 activation. The presence of C4d in peritubular capillaries is a key indicator for acute humoral (i.e. antibody-mediated) rejection of kidney, heart, pancreas and lung allografts. As an established marker of antibody-mediated acute renal allograft rejection and its proclivity for endothelium, this component can be detected in peritubular capillaries in chronic renal allograft rejection as well as hyperacute rejection, acute vascular rejection, acute cellular rejection, and borderline rejection. It has been shown to be a significant predictor of transplant kidney graft survival. Anti-C4d, combined with anti-C3d, can be utilized as a tool for diagnosis of allograft rejection that may warrant a prompt and aggressive anti-rejection treatment.

## Application Notes

Optimal dilution of the recombinant Complement 4d antibody should be determined by the researcher.

## Immunogen

Recombinant full-length human Complement 4d protein was used as the immunogen for the recombinant Complement 4d antibody.

## Storage

Aliquot the recombinant Complement 4d antibody and store frozen at -20oC or colder. Avoid repeated freeze-thaw cycles.