

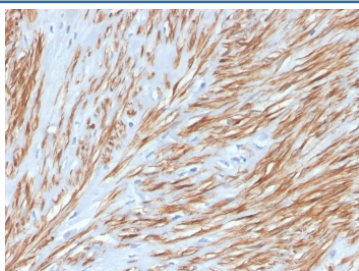
Recombinant CNN1 Antibody / Calponin-1 [clone CNN1/4227R] (V8744)

Catalog No.	Formulation	Size
V8744-100UG	0.2 mg/ml in 1X PBS with 0.1 mg/ml BSA (US sourced) and 0.05% sodium azide	100 ug
V8744-20UG	0.2 mg/ml in 1X PBS with 0.1 mg/ml BSA (US sourced) and 0.05% sodium azide	20 ug
V8744SAF-100UG	1 mg/ml in 1X PBS; BSA free, sodium azide free	100 ug

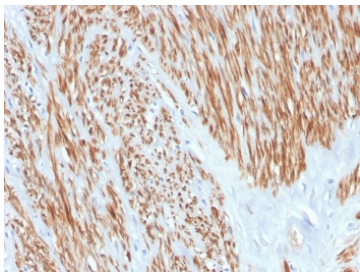
Recombinant **RABBIT MONOCLONAL**

[Bulk quote request](#)

Availability	1-3 business days
Species Reactivity	Human
Format	Purified
Clonality	Recombinant Rabbit Monoclonal
Isotype	Rabbit IgG
Clone Name	CNN1/4227R
Purity	Protein A affinity chromatography
UniProt	P51911
Localization	Cytoplasmic
Applications	Immunohistochemistry (FFPE) : 1-2ug/ml for 30 minutes at RT
Limitations	This recombinant CNN1 antibody is available for research use only.



IHC staining of FFPE human leiomyosarcoma with recombinant CNN1 antibody. HIER: boil tissue sections in pH 9 10mM Tris with 1mM EDTA for 20 min and allow to cool before testing.



IHC staining of FFPE human leiomyosarcoma with recombinant CNN1 antibody. HIER: boil tissue sections in pH 9 10mM Tris with 1mM EDTA for 20 min and allow to cool before testing.

Description

Calponin-1/CNN1, a 33 kDa polypeptide, is a cytoskeleton-associated actin-binding protein that also interacts tropomyosin and calmodulin. Calponin antibody has been found to be useful as a marker for myoepithelial and basal lamina in differentiating microinvasive from in situ ductal carcinomas of the breast. Calponin antibody may also have applications in malignant myoepithelium and pleomorphic adenoma of salivary gland as well as a useful marker for fine needle aspirates of papillary breast lesions. The antibody has been found in tissue extracts from smooth muscle, but not in fibroblast extracts.

Application Notes

Optimal dilution of the recombinant CNN1 antibody should be determined by the researcher.

Immunogen

A synthetic peptide from the C-terminus of the human protein was used as the immunogen for the recombinant CNN1 antibody.

Storage

Store the recombinant CNN1 antibody at 2-8°C (with azide) or aliquot and store at -20°C or colder (without azide).