

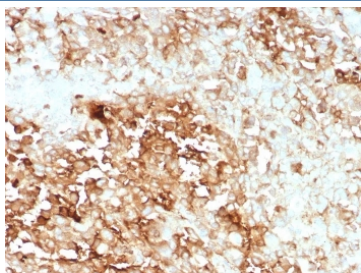
Recombinant CLU Antibody / Clusterin / Apolipoprotein J [clone rCLU/9149] (V5462)

| Catalog No. | Formulation | Size |
|----------------|---|--------|
| V5462-100UG | 0.2 mg/ml in 1X PBS with 0.1 mg/ml BSA (US sourced), 0.05% sodium azide | 100 ug |
| V5462-20UG | 0.2 mg/ml in 1X PBS with 0.1 mg/ml BSA (US sourced), 0.05% sodium azide | 20 ug |
| V5462SAF-100UG | 1 mg/ml in 1X PBS; BSA free, sodium azide free | 100 ug |

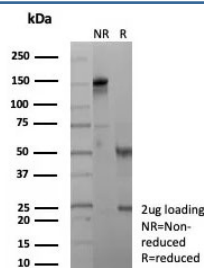
Recombinant MOUSE MONOCLONAL

[Bulk quote request](#)

| | |
|--------------------|---|
| Availability | 1-3 business days |
| Species Reactivity | Human |
| Format | Purified |
| Host | Mouse |
| Clonality | Recombinant Mouse Monoclonal |
| Isotype | Mouse IgG2b, kappa |
| Clone Name | rCLU/9149 |
| Purity | Protein A/G affinity |
| UniProt | P10909 |
| Localization | Cytoplasm |
| Applications | Immunohistochemistry (FFPE) : 1-2ug/ml |
| Limitations | This recombinant CLU antibody is available for research use only. |



IHC staining of FFPE human adrenal gland tissue with recombinant CLU antibody (clone rCLU/9149). HIER: boil tissue sections in pH 9 10mM Tris with 1mM EDTA for 20 min and allow to cool before testing.



SDS-PAGE analysis of purified, BSA-free recombinant CLU antibody (clone rCLU/9149) as confirmation of integrity and purity.

Description

Clusterin, also designated complement lysis inhibitor (CLI), apolipoprotein J (APOJ), sulfated glycoprotein 2 (SGP2), SP40 and testosterone-repressed prostate message 2 (TRPM2), is a secretory, heterodimeric glycoprotein that influences immune regulation, cell adhesion, transformation, lipid transportation, tissue remodeling, membrane recycling and cell-cell interactions. Clusterin is synthesized as a 449 amino acid polypeptide that is post-translationally cleaved at an internal bond between Arg 227 and Ser 228. Two subunits, alpha and beta, are associated through disulfide bonds. The Clusterin beta subunit (also called ApoJ-alpha) corresponds to residues 23-227. The alpha subunit (also called ApoJ-beta) corresponds to residues 228-449. Overexpression of Clusterin appears to be more common in late stages of mammary tumor progression. Clusterin markedly influences b-Amyloid structure and neuritic toxicity in vivo and may influence Alzheimer s pathogenesis.

Application Notes

Optimal dilution of the recombinant CLU antibody should be determined by the researcher.

Immunogen

A recombinant fragment (within amino acids 410-440) of human CLU protein was used as the immunogen for the recombinant CLU antibody.

Storage

Aliquot the recombinant CLU antibody and store frozen at -20oC or colder. Avoid repeated freeze-thaw cycles.