

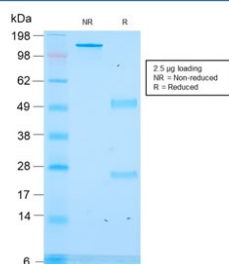
## Recombinant CLIP Antibody / ACTH [clone rCLIP/1418] (V8017)

Catalog No.	Formulation	Size
V8017-100UG	0.2 mg/ml in 1X PBS with 0.1 mg/ml BSA (US sourced) and 0.05% sodium azide	100 ug
V8017-20UG	0.2 mg/ml in 1X PBS with 0.1 mg/ml BSA (US sourced) and 0.05% sodium azide	20 ug
V8017SAF-100UG	1 mg/ml in 1X PBS; BSA free, sodium azide free	100 ug

Recombinant **MOUSE MONOCLONAL**

[Bulk quote request](#)

Availability	1-3 business days
Species Reactivity	Human
Format	Purified
Host	Mouse
Clonality	Recombinant Mouse Monoclonal
Isotype	Mouse IgG1, kappa
Clone Name	rCLIP/1418
Purity	Protein G affinity chromatography
UniProt	P01189
Applications	ELISA (order BSA-free Format For Coating) :
Limitations	This recombinant CLIP antibody is available for research use only.



SDS-PAGE analysis of purified, BSA-free recombinant CLIP antibody (clone rCLIP/1418) as confirmation of integrity and purity.

## Description

ACTH (same as Corticotropin) is a 39 amino acid active peptide produced by the anterior pituitary. This MAb is specific to CLIP (aa25-39 of ACTH); does not react with Synacthen (aa1-24 of ACTH). POMC (pro-opiomelanocortin or corticotropin-

lipotropin) is a 267 amino acid polypeptide hormone precursor that goes through extensive, tissue-specific posttranslational processing by convertases. POMC is cleaved into ten hormone chains named NPP, ACTH, alpha-MSH (Melanocyte Stimulating Hormone), beta-MSH, gamma-MSH, CLIP (corticotropin-like intermediary peptide), Lipotropin-beta, Lipotropin-gamma, beta-endorphin and Met-enkephalin. ACTH is also produced by cells of immune system (T-cells, B-cells, and macrophages) in response to stimuli associated with stress. Anti-ACTH is a useful marker in classification of pituitary tumors and the study of pituitary disease. It reacts with ACTH-producing cells (corticotrophs). It also may react with other tumors (e.g. some small cell carcinomas of the lung) causing paraneoplastic syndromes by secreting ACTH.

## Application Notes

Optimal dilution of the recombinant CLIP antibody should be determined by the researcher.

## Immunogen

Amino acids 25-39 (NGAEDESAEAFPLEF) from human ACTH were used as the immunogen for this recombinant CLIP antibody.

## Storage

Store the recombinant CLIP antibody at 2-8oC (with azide) or aliquot and store at -20oC or colder (without azide).