

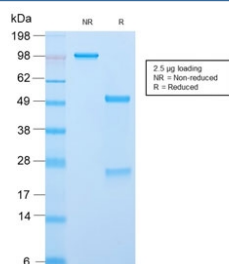
Recombinant CLIP Antibody / ACTH [clone CLIP/2859R] (V8018)

Catalog No.	Formulation	Size
V8018-100UG	0.2 mg/ml in 1X PBS with 0.1 mg/ml BSA (US sourced) and 0.05% sodium azide	100 ug
V8018-20UG	0.2 mg/ml in 1X PBS with 0.1 mg/ml BSA (US sourced) and 0.05% sodium azide	20 ug
V8018SAF-100UG	1 mg/ml in 1X PBS; BSA free, sodium azide free	100 ug

Recombinant **RABBIT MONOCLONAL**

[Bulk quote request](#)

Availability	1-3 business days
Species Reactivity	Human
Format	Purified
Host	Rabbit
Clonality	Recombinant Rabbit Monoclonal
Isotype	Rabbit IgG, kappa
Clone Name	CLIP/2859R
Purity	Protein A affinity chromatography
UniProt	P01189
Applications	ELISA (order BSA-free Format For Coating) :
Limitations	This recombinant CLIP antibody is available for research use only.



SDS-PAGE analysis of purified, BSA-free recombinant CLIP antibody (clone CLIP/2859R) as confirmation of integrity and purity.

Description

ACTH (same as Corticotropin) is a 39 amino acid active peptide produced by the anterior pituitary. This MAb is specific to CLIP (aa25-39 of ACTH); does not react with Synacthen (aa1-24 of ACTH). POMC (pro-opiomelanocortin or corticotropin-

lipotropin) is a 267 amino acid polypeptide hormone precursor that goes through extensive, tissue-specific posttranslational processing by convertases. POMC is cleaved into ten hormone chains named NPP, ACTH, alpha-MSH (Melanocyte Stimulating Hormone), beta-MSH, gamma-MSH, CLIP (corticotropin-like intermediary peptide), Lipotropin-beta, Lipotropin-gamma, beta-endorphin and Met-enkephalin. ACTH is also produced by cells of immune system (T-cells, B-cells, and macrophages) in response to stimuli associated with stress. Anti-ACTH is a useful marker in classification of pituitary tumors and the study of pituitary disease. It reacts with ACTH-producing cells (corticotrophs). It also may react with other tumors (e.g. some small cell carcinomas of the lung) causing paraneoplastic syndromes by secreting ACTH.

Application Notes

Optimal dilution of the recombinant CLIP antibody should be determined by the researcher.

Immunogen

Amino acids 25-39 (NGAEDESAEAFPLEF) from human ACTH were used as the immunogen for this recombinant CLIP antibody.

Storage

Store the recombinant CLIP antibody at 2-8oC (with azide) or aliquot and store at -20oC or colder (without azide).