

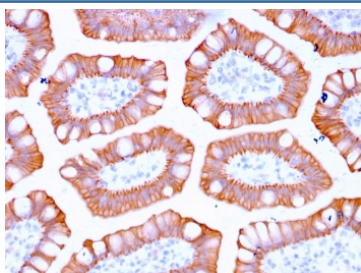
Recombinant CK20 Antibody / Cytokeratin 20 [clone KRT20/3129R] (V8313)

Catalog No.	Formulation	Size
V8313-100UG	0.2 mg/ml in 1X PBS with 0.1 mg/ml BSA (US sourced) and 0.05% sodium azide	100 ug
V8313-20UG	0.2 mg/ml in 1X PBS with 0.1 mg/ml BSA (US sourced) and 0.05% sodium azide	20 ug
V8313SAF-100UG	1 mg/ml in 1X PBS; BSA free, sodium azide free	100 ug

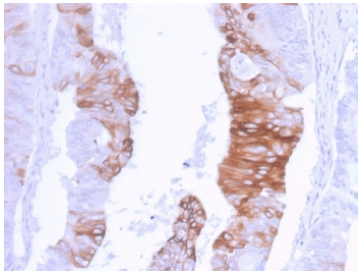
Recombinant **RABBIT MONOCLONAL**

[Bulk quote request](#)

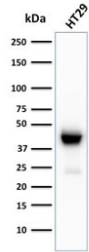
Availability	1-3 business days
Species Reactivity	Human
Format	Purified
Host	Rabbit
Clonality	Recombinant Rabbit Monoclonal
Isotype	Rabbit IgG
Clone Name	KRT20/3129R
Purity	Protein A affinity chromatography
UniProt	P35900
Localization	Cytoplasmic
Applications	Western Blot : 1-2ug/ml Immunohistochemistry (FFPE) : 1-2ug/ml
Limitations	This recombinant CK20 antibody is available for research use only.



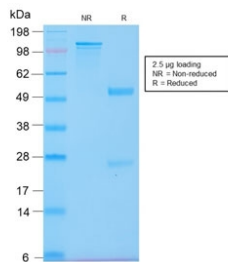
IHC staining of FFPE human colon with recombinant CK20 antibody (clone KRT20/3129R). HIER: boil tissue sections in pH 9 10mM Tris with 1mM EDTA for 20 min and allow to cool before testing.



IHC staining of FFPE human colon carcinoma with recombinant CK20 antibody (clone KRT20/3129R). HIER: boil tissue sections in pH 9 10mM Tris with 1mM EDTA for 20 min and allow to cool before testing.



Western blot testing of human HT29 cell lysate with recombinant CK20 antibody (clone KRT20/3129R). Predicted molecular weight ~46 kDa.



SDS-PAGE analysis of purified, BSA-free recombinant CK20 antibody (clone KRT20/3129R) as confirmation of integrity and purity.

Description

This MAb recognizes an intermediate filament protein of 46kDa, identified as cytokeratin 20 (KRT20). KRT20 is abundantly expressed in goblet cells and enterocytes of the gastrointestinal tract. It is a useful marker of pancreatic and colorectal cancer. KRT20 is expressed under normal, hyperplastic and neoplastic conditions. It has been detected in adenocarcinomas of the colon, stomach and biliary tract. Breast carcinomas are generally non-reactive.

Application Notes

Optimal dilution of the recombinant CK20 antibody should be determined by the researcher.

Immunogen

A recombinant human partial protein (amino acids 196-323) was used as the immunogen for this Cytokeratin 20 antibody.

Storage

Store the recombinant CK20 antibody at 2-8°C (with azide) or aliquot and store at -20°C or colder (without azide).

