

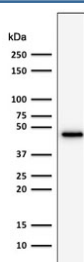
## Recombinant CK19 Antibody / Cytokeratin 19 [clone rKRT19/800] (V3613)

Catalog No.	Formulation	Size
V3613-100UG	0.2 mg/ml in 1X PBS with 0.1 mg/ml BSA (US sourced) and 0.05% sodium azide	100 ug
V3613-20UG	0.2 mg/ml in 1X PBS with 0.1 mg/ml BSA (US sourced) and 0.05% sodium azide	20 ug
V3613SAF-100UG	1 mg/ml in 1X PBS; BSA free, sodium azide free	100 ug
V3613IHC-7ML	Prediluted in 1X PBS with 0.1 mg/ml BSA (US sourced) and 0.05% sodium azide; *For IHC use only*	7 ml

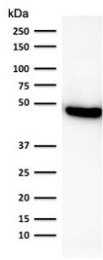
Recombinant **MOUSE MONOCLONAL**

[Bulk quote request](#)

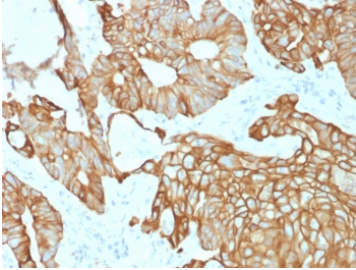
<b>Availability</b>	1-3 business days
<b>Species Reactivity</b>	Human
<b>Format</b>	Purified
<b>Host</b>	Mouse
<b>Clonality</b>	Recombinant Mouse Monoclonal
<b>Isotype</b>	Mouse IgG1, kappa
<b>Clone Name</b>	rKRT19/800
<b>Purity</b>	Protein G affinity chromatography
<b>UniProt</b>	P08727
<b>Localization</b>	Cytoplasmic, cell membrane, secreted
<b>Applications</b>	Western Blot : 1-2ug/ml Immunohistochemistry (FFPE) : 1-2ug/ml for 30 min at RT
<b>Limitations</b>	This recombinant CK19 antibody is available for research use only.



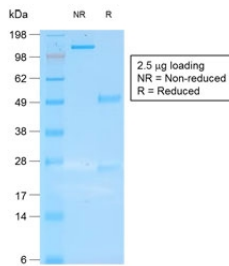
Western blot testing of human HepG2 cell lysate using recombinant CK19 antibody (clone rKRT19/800). Predicted molecular weight ~43 kDa.



Western blot testing of human lung lysate using recombinant CK19 antibody (clone rKRT19/800). Predicted molecular weight ~43 kDa.



IHC testing of FFPE human colon carcinoma with recombinant CK19 antibody (clone rKRT19/800). Required HIER: boil tissue sections in pH 9 10mM Tris with 1mM EDTA for 10-20 min followed by cooling at RT for 20 min.



SDS-PAGE analysis of purified, BSA-free recombinant CK19 antibody (clone rKRT19/800) as confirmation of integrity and purity.

## Description

Recognizes a protein of 40kDa, identified as cytokeratin-19 (CK19), which is expressed in sweat gland, mammary gland ductal and secretory cells, bile ducts, gastrointestinal tract, bladder urothelium, oral epithelia, esophagus, and ectocervical epithelium. Anti-CK19 reacts with a wide variety of epithelial malignancies including adenocarcinomas of the colon, stomach, pancreas, biliary tract, liver, and breast. Perhaps the most useful application is the identification of thyroid carcinoma of the papillary type, although 50%-60% of follicular carcinomas are also labeled. Anti-CK19 is a useful marker for detection of tumor cells in lymph nodes, peripheral blood, bone marrow and breast cancer.

## Application Notes

Optimal dilution of the recombinant CK19 antibody should be determined by the researcher.

1. The prediluted format is supplied in a dropper bottle and is optimized for use in IHC. After epitope retrieval step (if required), drip mAb solution onto the tissue section and incubate at RT for 30 min.

## Immunogen

Recombinant human Cytokeratin 19 protein was used as the immunogen for the recombinant CK19 antibody.

## Storage

Store the recombinant CK19 antibody at 2-8oC (with azide) or aliquot and store at -20oC or colder (without azide).

