

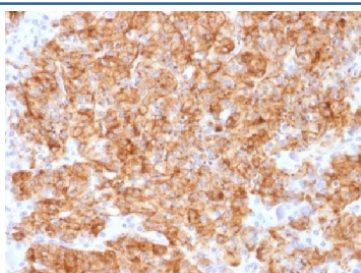
## Recombinant Chromogranin A Antibody / Rabbit Monoclonal [clone CHGA/1773R] (V3437)

Catalog No.	Formulation	Size
V3437-100UG	0.2 mg/ml in 1X PBS with 0.1 mg/ml BSA (US sourced) and 0.05% sodium azide	100 ug
V3437-20UG	0.2 mg/ml in 1X PBS with 0.1 mg/ml BSA (US sourced) and 0.05% sodium azide	20 ug
V3437SAF-100UG	1 mg/ml in 1X PBS; BSA free, sodium azide free	100 ug
V3437IHC-7ML	Prediluted in 1X PBS with 0.1 mg/ml BSA (US sourced) and 0.05% sodium azide; *For IHC use only*	7 ml

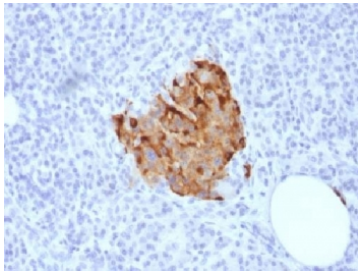
Recombinant **RABBIT MONOCLONAL**

[Bulk quote request](#)

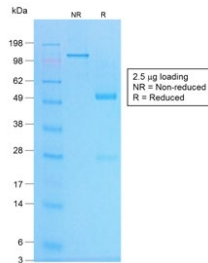
Availability	1-3 business days
Species Reactivity	Human
Format	Purified
Host	Rabbit
Clonality	Recombinant Rabbit Monoclonal
Isotype	Rabbit IgG, kappa
Clone Name	CHGA/1773R
Purity	Protein A affinity chromatography
UniProt	P10645
Localization	Cytoplasmic
Applications	Immunohistochemistry (FFPE) : 0.5-1ug/ml for 30 min at RT
Limitations	This recombinant Chromogranin A antibody is available for research use only.



IHC analysis of FFPE human parathyroid gland stained with recombinant Chromogranin A antibody (clone CHGA/1773R). Required HIER: steam sections in pH6 citrate buffer for 10-20 min.



IHC analysis of FFPE human pancreas stained with recombinant Chromogranin A antibody (clone CHGA/1773R). Required HIER: steam sections in pH6 citrate buffer for 10-20 min.



SDS-PAGE analysis of purified, BSA-free recombinant Chromogranin A antibody (clone CHGA/1773R) as confirmation of integrity and purity.

## Description

Chromogranin A is present in neuroendocrine cells throughout the body, including the neuroendocrine cells of the large and small intestine, adrenal medulla and pancreatic islets. It is an excellent marker for carcinoid tumors, pheochromocytomas, paragangliomas, and other neuroendocrine tumors. Co-expression of chromogranin A and neuron specific enolase (NSE) is common in neuroendocrine neoplasms. Reportedly, co-expression of certain keratins and chromogranin indicates neuroendocrine lineage. The presence of strong anti-chromogranin staining and absence of anti-keratin staining should raise the possibility of paraganglioma. The co-expression of chromogranin and NSE is typical of neuroendocrine neoplasms. Most pituitary adenomas and prolactinomas readily express chromogranin.

## Application Notes

Optimal dilution of the recombinant Chromogranin A antibody should be determined by the researcher.

1. The prediluted format is supplied in a dropper bottle and is optimized for use in IHC. After epitope retrieval step (if required), drip mAb solution onto the tissue section and incubate at RT for 30 min.

## Immunogen

Recombinant human protein was used as the immunogen for the recombinant Chromogranin A antibody.

## Storage

Store the recombinant Chromogranin A antibody at 2-8°C (with azide) or aliquot and store at -20°C or colder (without azide).

