

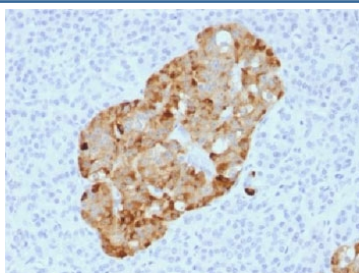
## Recombinant Chromogranin A Antibody [clone CHGA/1731R] (V3824)

Catalog No.	Formulation	Size
V3824-100UG	0.2 mg/ml in 1X PBS with 0.1 mg/ml BSA (US sourced) and 0.05% sodium azide	100 ug
V3824-20UG	0.2 mg/ml in 1X PBS with 0.1 mg/ml BSA (US sourced) and 0.05% sodium azide	20 ug
V3824SAF-100UG	1 mg/ml in 1X PBS; BSA free, sodium azide free	100 ug

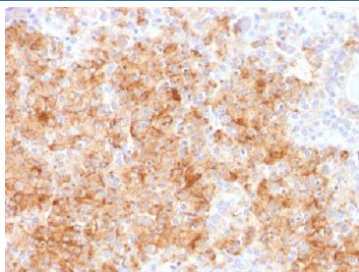
Recombinant **RABBIT MONOCLONAL**

[Bulk quote request](#)

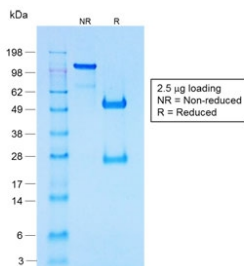
Availability	1-3 business days
Species Reactivity	Human
Format	Purified
Host	Rabbit
Clonality	Recombinant Rabbit Monoclonal
Isotype	Rabbit IgG, kappa
Clone Name	CHGA/1731R
Purity	Protein A affinity chromatography
UniProt	P10645
Localization	Cytoplasmic
Applications	Immunohistochemistry (FFPE) : 0.5-1ug/ml for 30 min at RT
Limitations	This recombinant Chromogranin A antibody is available for research use only.



IHC analysis of FFPE human pancreas stained with recombinant Chromogranin A antibody (CHGA/1731R). Required HIER: steam sections in pH6 citrate buffer for 10-20 min.



IHC analysis of FFPE human parathyroid gland stained with recombinant Chromogranin A antibody (CHGA/1731R). Required HIER: steam sections in pH6 citrate buffer for 10-20 min.



SDS-PAGE analysis of purified, BSA-free recombinant Chromogranin A antibody (clone CHGA/1731R) as confirmation of integrity and purity.

#### Human Protein Microarray Specificity Validation



Analysis of HuProt(TM) microarray containing more than 19,000 full-length human proteins using Chromogranin A antibody (clone CHGA/1731R). These results demonstrate the foremost specificity of the CHGA/1731R mAb.

Z- and S- score: The Z-score represents the strength of a signal that an antibody (in combination with a fluorescently-tagged anti-IgG secondary Ab) produces when binding to a particular protein on the HuProt(TM) array. Z-scores are described in units of standard deviations (SD's) above the mean value of all signals generated on that array. If the targets on the HuProt(TM) are arranged in descending order of the Z-score, the S-score is the difference (also in units of SD's) between the Z-scores. The S-score therefore represents the relative target specificity of an Ab to its intended target.

## Description

Recombinant Chromogranin A antibody is a dependable tool for detecting chromogranin A, a secretory glycoprotein encoded by the CHGA gene and stored in dense core granules of neuroendocrine cells. Chromogranin A plays key roles in hormone storage, regulated secretion, and peptide hormone processing. Because of its broad distribution across endocrine tissues and tumors, chromogranin A is a central subject in neuroendocrine biology, pathology, and translational medicine.

Chromogranin A is cleaved into smaller peptides with biological activity, including vasostatin, pancreastatin, and catestatin. These fragments influence vascular tone, metabolic regulation, and neuroimmune interactions, highlighting the wide functional range of this protein. Its circulating levels are widely used as biomarkers for neuroendocrine tumors, providing diagnostic and prognostic value in cancers of the pancreas, adrenal glands, and gastrointestinal tract.

The Recombinant Chromogranin A antibody clone CHGA/1731R ensures reproducible and specific recognition. Recombinant production removes lot-to-lot variability, supporting consistency in long-term studies. Clone CHGA/1731R has been used in peer-reviewed publications investigating neuroendocrine tumor classification and endocrine peptide regulation, further demonstrating its utility in both research and diagnostic contexts.

Studies with clone CHGA/1731R have expanded understanding of how chromogranin A contributes to secretory granule biogenesis and regulated exocytosis. Elevated chromogranin A levels in plasma have been linked to neuroendocrine malignancies, pheochromocytomas, and paragangliomas, reinforcing its role as a biomarker. This antibody provides precise detection for researchers investigating tumor biology, hormone regulation, and neuroendocrine physiology.

NSJ Bioreagents offers this Recombinant Chromogranin A antibody to support research in endocrinology, cancer, and neurobiology. Chromogranin A is also described as CHGA antibody, secretogranin I antibody, neuroendocrine marker

antibody, and parathyroid secretory protein antibody, illustrating the multiple terms used in scientific literature.

## Application Notes

Optimal dilution of the recombinant Chromogranin A antibody should be determined by the researcher.

1. The prediluted format is supplied in a dropper bottle and is optimized for use in IHC. After epitope retrieval step (if required), drip mAb solution onto the tissue section and incubate at RT for 30 min.

## Immunogen

Recombinant human protein was used as the immunogen for the recombinant Chromogranin A antibody.

## Storage

Store the recombinant Chromogranin A antibody at 2-8oC (with azide) or aliquot and store at -20oC or colder (without azide).