

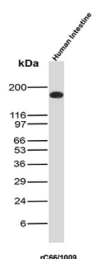
Recombinant CEA Antibody / CEACAM5 [clone rC66/1009] (V3597)

Catalog No.	Formulation	Size
V3597-100UG	0.2 mg/ml in 1X PBS with 0.1 mg/ml BSA (US sourced) and 0.05% sodium azide	100 ug
V3597-20UG	0.2 mg/ml in 1X PBS with 0.1 mg/ml BSA (US sourced) and 0.05% sodium azide	20 ug
V3597SAF-100UG	1 mg/ml in 1X PBS; BSA free, sodium azide free	100 ug
V3597IHC-7ML	Prediluted in 1X PBS with 0.1 mg/ml BSA (US sourced) and 0.05% sodium azide; *For IHC use only*	7 ml

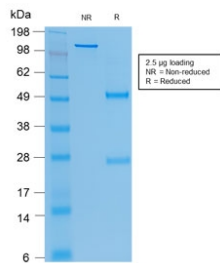
Recombinant **MOUSE MONOCLONAL**

[Bulk quote request](#)

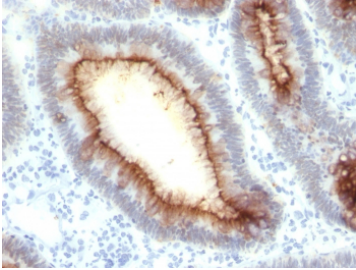
Species Reactivity	Human
Format	Purified
Host	Mouse
Clonality	Recombinant Mouse Monoclonal
Isotype	Mouse IgG1, kappa
Clone Name	rC66/1009
Purity	Protein G affinity chromatography
UniProt	P06731
Localization	Cytoplasmic and luminal surface
Applications	Immunohistochemistry (FFPE) : 1-2ug/ml for 30 min at RT (1) (2) Western Blot : 2-4ug/ml
Limitations	This recombinant CEA antibody is available for research use only.



CEA Antibody Intestine WB. Western blot analysis of CEA / CEACAM5 expression in human intestine tissue lysate using recombinant CEA antibody, clone rC66/1009. Lane 1: human intestine tissue lysate. A strong band is detected at approximately 180-200 kDa, consistent with the predicted molecular weight of CEACAM5, with the elevated apparent size reflecting extensive glycosylation typical of this epithelial cell surface glycoprotein.



SDS-PAGE analysis of purified, BSA-free recombinant CEA antibody (clone rC66/1009) as confirmation of integrity and purity.



IHC testing of FFPE human colon carcinoma with CEA antibody (clone rC66/1009). Required HIER: boil tissue sections in pH 9 10mM Tris with 1mM EDTA for 10-20 min followed by cooling at RT for 20 min.

Description

This antibody recognizes proteins of 80-200 kDa, identified as different members of the CEA (Carcinoembryonic Antigen) family. CEA is synthesized during development in the fetal gut and is re-expressed in increased amounts in intestinal carcinomas and several other tumors. This antibody does not react with nonspecific cross-reacting antigen (NCA) and with human polymorphonuclear leucocytes. The antibody shows no reaction with a variety of normal tissues and is suitable for staining of formalin/paraffin tissues. CEA is not found in benign glands, stroma, or malignant prostatic cells. antibody to CEA is useful in detecting early foci of gastric carcinoma and in distinguishing pulmonary adenocarcinomas (60-70% are CEA+) from pleural mesotheliomas (rarely or weakly CEA+). CEA antibody positivity is seen in adenocarcinomas from the lung, colon, stomach, esophagus, pancreas, gallbladder, urachus, salivary gland, ovary, and endocervix.

This CEA antibody is part of a [broader CEA antibody panel](#) offered by NSJ Bioreagents.

Application Notes

The concentration stated for each application is a general starting point. Variations in protocols, secondaries and substrates may require the recombinant CEA antibody to be titrated up or down for optimal performance.

1. The prediluted format is supplied in a dropper bottle and is optimized for use in IHC. After epitope retrieval step (if required), drip mAb solution onto the tissue section and incubate at RT for 30 min.
2. This antibody does not react with nonspecific cross-reacting antigen (NCA).

Immunogen

Full-length recombinant human protein was used as the immunogen for this recombinant CEA antibody.

Storage

Store the recombinant CEA antibody at 2-8oC (with azide) or aliquot and store at -20oC or colder (without azide).

Alternate Names

Carcinoembryonic Antigen-related Cell Adhesion Molecule 5 antibody, CEACAM5 antibody, CD66 antibody

References (4)

