

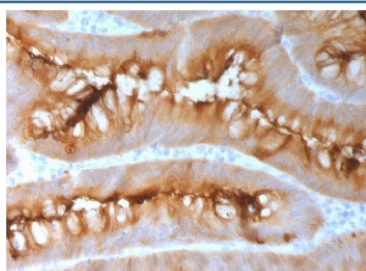
Recombinant CEA Antibody / CEACAM5 [clone CCAM5-2R] (V3716)

Catalog No.	Formulation	Size
V3716-100UG	0.2 mg/ml in 1X PBS with 0.1 mg/ml BSA (US sourced) and 0.05% sodium azide	100 ug
V3716-20UG	0.2 mg/ml in 1X PBS with 0.1 mg/ml BSA (US sourced) and 0.05% sodium azide	20 ug
V3716SAF-100UG	1 mg/ml in 1X PBS; BSA free, sodium azide free	100 ug
V3716IHC-7ML	Prediluted in 1X PBS with 0.1 mg/ml BSA (US sourced) and 0.05% sodium azide; *For IHC use only*	7 ml

Recombinant **RABBIT MONOCLONAL**

[Bulk quote request](#)

Species Reactivity	Human
Format	Purified
Host	Rabbit
Clonality	Recombinant Rabbit Monoclonal
Isotype	Rabbit IgG, kappa
Clone Name	CCAM5-2R
Purity	Protein A affinity chromatography
UniProt	P06731
Localization	Cytoplasmic and luminal surface
Applications	Immunohistochemistry (FFPE) : 0.5-1ug/ml for 30 min at RT Prediluted IHC Only Format : incubate for 30 min at RT (1)
Limitations	This recombinant CEA antibody is available for research use only.



IHC testing of FFPE human melanoma with CEA antibody (clone CCAM5-2R). Required HIER: boil tissue sections in 10mM citrate buffer, pH6, for 10-20 min followed by cooling at RT for 20 min.

Description

Carcinoembryonic antigen (CEA) describes a set of highly related glycoproteins involved in cell adhesion. CEA is normally produced in gastrointestinal tissue during fetal development, but the production stops before birth. Therefore, CEA is usually present only at very low levels in the blood of healthy adults. However, the serum levels are raised in some types of cancer, which means that it can be used as a tumor marker in clinical tests. [Wiki]

Application Notes

Optimal dilution of the recombinant CEA antibody should be determined by the researcher..

1. The prediluted format is supplied in a dropper bottle and is optimized for use in IHC. After epitope retrieval step (if required), drip mAb solution onto the tissue section and incubate at RT for 30 min.

Immunogen

Recombinant human protein was used as the immunogen for this recombinant CEA antibody.

Storage

Store the recombinant CEA antibody at 2-8oC (with azide) or aliquot and store at -20oC or colder (without azide).

References (4)