

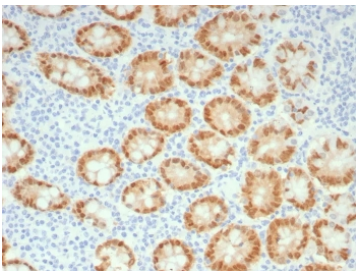
Recombinant CDX2 Antibody / Caudal-type homeobox protein 2 [clone rCDX2/9241] (V5615)

Catalog No.	Formulation	Size
V5615-100UG	0.2 mg/ml in 1X PBS with 0.1 mg/ml BSA (US sourced), 0.05% sodium azide	100 ug
V5615-20UG	0.2 mg/ml in 1X PBS with 0.1 mg/ml BSA (US sourced), 0.05% sodium azide	20 ug
V5615SAF-100UG	1 mg/ml in 1X PBS; BSA free, sodium azide free	100 ug

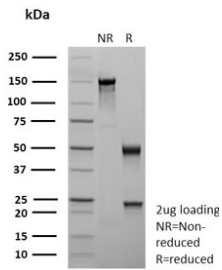
Recombinant **MOUSE MONOCLONAL**

[Bulk quote request](#)

Availability	1-3 business days
Species Reactivity	Human
Format	Purified
Host	Mouse
Clonality	Recombinant Mouse Monoclonal
Isotype	Mouse IgG2b, kappa
Clone Name	rCDX2/9241
Purity	Protein A/G affinity
UniProt	Q99626
Localization	Nucleus
Applications	Immunohistochemistry (FFPE) : 1-2ug/ml
Limitations	This recombinant CDX2 antibody is available for research use only.



IHC staining of FFPE human colon tissue with recombinant CDX2 antibody (clone rCDX2/9241). HIER: boil tissue sections in pH 9 10mM Tris with 1mM EDTA for 20 min and allow to cool before testing.



SDS-PAGE analysis of purified, BSA-free recombinant CDX2 antibody (clone rCDX2/9241) as confirmation of integrity and purity.

Description

The intestine-specific transcription factors CDX1 and CDX2 are important for directing intestinal development, differentiation, proliferation and maintenance of the intestinal phenotype. CDX2 protein expression has been seen in GI carcinomas. Anti-CDX2 has been useful to establish GI origin of metastatic adenocarcinomas and carcinoids and is especially useful to distinguish metastatic colorectal adenocarcinoma from lung adenocarcinoma. However, mucinous carcinomas of the ovary also express CDX2 protein. It limits the usefulness of this marker in the distinction of metastatic colorectal adenocarcinoma from mucinous carcinoma of the ovary.

Application Notes

Optimal dilution of the recombinant CDX2 antibody should be determined by the researcher.

Immunogen

A recombinant fragment (within amino acids 100-300) of human CDX2 protein was used as the immunogen for the recombinant CDX2 antibody.

Storage

Aliquot the recombinant CDX2 antibody and store frozen at -20°C or colder. Avoid repeated freeze-thaw cycles.