

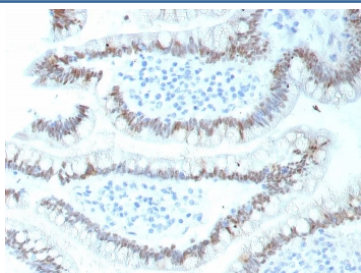
## Recombinant CDX2 Antibody / Caudal-type homeobox protein 2 [clone CDX2/9298R] (V5614)

Catalog No.	Formulation	Size
V5614-100UG	0.2 mg/ml in 1X PBS with 0.1 mg/ml BSA (US sourced), 0.05% sodium azide	100 ug
V5614-20UG	0.2 mg/ml in 1X PBS with 0.1 mg/ml BSA (US sourced), 0.05% sodium azide	20 ug
V5614SAF-100UG	1 mg/ml in 1X PBS; BSA free, sodium azide free	100 ug

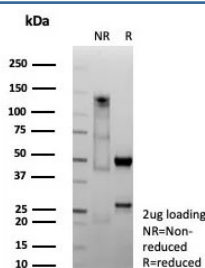
Recombinant **RABBIT MONOCLONAL**

[Bulk quote request](#)

<b>Availability</b>	1-3 business days
<b>Species Reactivity</b>	Human
<b>Format</b>	Purified
<b>Host</b>	Rabbit
<b>Clonality</b>	Recombinant Rabbit Monoclonal
<b>Isotype</b>	Rabbit IgG, kappa
<b>Clone Name</b>	CDX2/9298R
<b>Purity</b>	Protein A/G affinity
<b>UniProt</b>	Q99626
<b>Localization</b>	Nucleus
<b>Applications</b>	Immunohistochemistry (FFPE) : 1-2ug/ml
<b>Limitations</b>	This recombinant CDX2 antibody is available for research use only.



IHC staining of FFPE human colon tissue with recombinant CDX2 antibody (clone CDX2/9298R). HIER: boil tissue sections in pH 9 10mM Tris with 1mM EDTA for 20 min and allow to cool before testing.



SDS-PAGE analysis of purified, BSA-free recombinant CDX2 antibody (clone CDX2/9298R) as confirmation of integrity and purity.

## Description

The intestine-specific transcription factors CDX1 and CDX2 are important for directing intestinal development, differentiation, proliferation and maintenance of the intestinal phenotype. CDX2 protein expression has been seen in GI carcinomas. Anti-CDX2 has been useful to establish GI origin of metastatic adenocarcinomas and carcinoids and is especially useful to distinguish metastatic colorectal adenocarcinoma from lung adenocarcinoma. However, mucinous carcinomas of the ovary also express CDX2 protein. It limits the usefulness of this marker in the distinction of metastatic colorectal adenocarcinoma from mucinous carcinoma of the ovary.

## Application Notes

Optimal dilution of the recombinant CDX2 antibody should be determined by the researcher.

## Immunogen

Recombinant full-length human CDX2 protein was used as the immunogen for the recombinant CDX2 antibody.

## Storage

Aliquot the recombinant CDX2 antibody and store frozen at -20°C or colder. Avoid repeated freeze-thaw cycles.