

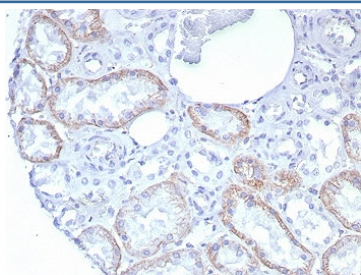
## Recombinant CDH2 Antibody / Cadherin-2 / N-Cadherin [clone rCDH2/8291] (V4565)

Catalog No.	Formulation	Size
V4565-100UG	0.2 mg/ml in 1X PBS with 0.1 mg/ml BSA (US sourced), 0.05% sodium azide	100 ug
V4565-20UG	0.2 mg/ml in 1X PBS with 0.1 mg/ml BSA (US sourced), 0.05% sodium azide	20 ug
V4565SAF-100UG	1 mg/ml in 1X PBS; BSA free, sodium azide free	100 ug

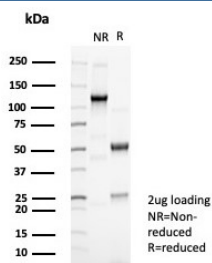
### Recombinant MOUSE MONOCLONAL

[Bulk quote request](#)

Availability	1-3 business days
Species Reactivity	Human
Format	Purified
Clonality	Recombinant Mouse Monoclonal
Isotype	Mouse IgG1, kappa
Clone Name	rCDH2/8291
Purity	Protein A/G affinity
UniProt	P19022
Localization	Cell surface
Applications	Immunohistochemistry (FFPE) : 1-2ug/ml for 30 min at RT
Limitations	This recombinant CDH2 antibody is available for research use only.



IHC staining of FFPE human kidney tissue with recombinant CDH2 antibody (clone rCDH2/8291). HIER: boil tissue sections in pH 9 10mM Tris with 1mM EDTA for 20 min and allow to cool before testing.



SDS-PAGE analysis of purified, BSA-free recombinant CDH2 antibody (clone rCDH2/8291) as confirmation of integrity and purity.

## Description

Recognizes a protein of ~140kDa, identified as N-Cadherin (NCAD), also known as CD325. NCAD is a member of the Cadherin superfamily, and consists of five extracellular repeats, a transmembrane domain and a cytoplasmic domain. CD325 deficient mice die at day 10 of gestation and embryos display major heart defects and malformed neural tubes and somites. Consistent with this, CD325 has been implicated in several aspects of cardiac development including the precardiac mesoderm, establishment of left-right symmetry and cardiac looping morphogenesis. Furthermore, CD325 is normally involved in inducing cell cycle arrest and its expression is frequently deregulated in cancer cells. Studies have linked N-cadherin to cancer metastasis by showing the aggressive tumor cells had preferentially turned on N-cadherin as opposed to E- or P-cadherin.

## Application Notes

Optimal dilution of the recombinant CDH2 antibody should be determined by the researcher.

## Immunogen

A recombinant partial protein sequence (within amino acids 605-905) from the human protein was used as the immunogen for the recombinant CDH2 antibody.

## Storage

Aliquot the recombinant CDH2 antibody and store frozen at -20oC or colder. Avoid repeated freeze-thaw cycles.