

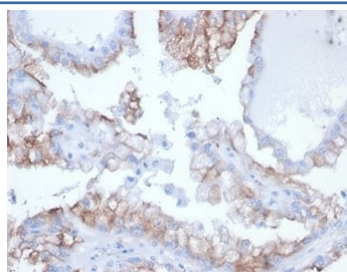
Recombinant Cdc20 Antibody [clone rCDC20/7184] (V9429)

Catalog No.	Formulation	Size
V9429-100UG	0.2 mg/ml in 1X PBS with 0.1 mg/ml BSA (US sourced), 0.05% sodium azide	100 ug
V9429-20UG	0.2 mg/ml in 1X PBS with 0.1 mg/ml BSA (US sourced), 0.05% sodium azide	20 ug
V9429SAF-100UG	1 mg/ml in 1X PBS; BSA free, sodium azide free	100 ug

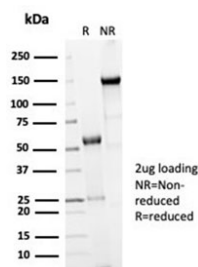
Recombinant **MOUSE MONOCLONAL**

[Bulk quote request](#)

Availability	1-3 business days
Species Reactivity	Human
Format	Purified
Clonality	Recombinant Mouse Monoclonal
Isotype	Mouse IgG1, kappa
Clone Name	rCDC20/7184
Purity	Protein A/G affinity
UniProt	Q12834
Localization	Cytoplasm
Applications	Immunohistochemistry (FFPE) : 1-2ug/ml
Limitations	This recombinant Cdc20 antibody is available for research use only.



IHC staining of FFPE human kidney cancer tissue with recombinant Cdc20 antibody (clone rCDC20/7184) at 2ug/ml. HIER: boil tissue sections in pH 9 10mM Tris with 1mM EDTA for 20 min and allow to cool before testing.



SDS-PAGE analysis of purified, BSA-free recombinant Cdc20 antibody (clone rCDC20/7184) as confirmation of integrity and purity.

Description

Cyclins, regulatory subunits, which associate with kinases, control many of the important steps in cell cycle progression. The Cdc2 protein kinase (p34Cdc2) exhibits protein kinase activity in vitro and exists in a complex with both cyclin B and a protein homologous to p13SUC1. Cdc2 kinase is the active subunit of the M phase promoting factor (MPF) and the M phase-specific Histone H1 kinase. The p34Cdc2/cyclin B complex is required for the G2 to M transition. An additional cell cycle-dependent protein kinase, termed p55cdc, exhibits a high degree of homology with the *S. cerevisiae* proteins Cdc20 and Cdc4. The p55cdc transcript is readily detectable in a variety of cultured cell lines in growth phase, but disappears when cell growth is chemically arrested.

Application Notes

Optimal dilution of the recombinant Cdc20 antibody should be determined by the researcher.

Immunogen

Recombinant human Cdc20 protein was used as the immunogen for the recombinant Cdc20 antibody.

Storage

Aliquot the recombinant Cdc20 antibody and store frozen at -20oC or colder. Avoid repeated freeze-thaw cycles.