

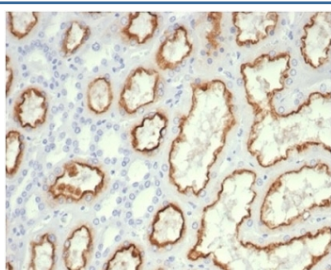
## Recombinant Cdc20 Antibody [clone CDC20/7026R] (V9446)

| Catalog No.    | Formulation   | Size   |
|----------------|---|--------|
| V9446-100UG    | 0.2 mg/ml in 1X PBS with 0.1 mg/ml BSA (US sourced), 0.05% sodium azide | 100 ug |
| V9446-20UG     | 0.2 mg/ml in 1X PBS with 0.1 mg/ml BSA (US sourced), 0.05% sodium azide | 20 ug  |
| V9446SAF-100UG | 1 mg/ml in 1X PBS; BSA free, sodium azide free                          | 100 ug |

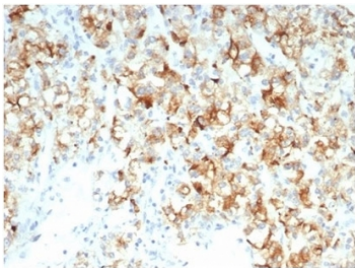
Recombinant **RABBIT MONOCLONAL**

[Bulk quote request](#)

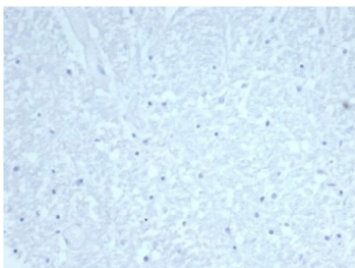
|                           |   |
|---------------------------|---|
| <b>Availability</b>       | 1-3 business days   |
| <b>Species Reactivity</b> | Human   |
| <b>Format</b>             | Purified  |
| <b>Clonality</b>          | Recombinant Rabbit Monoclonal                                       |
| <b>Isotype</b>            | Rabbit IgG, kappa   |
| <b>Clone Name</b>         | CDC20/7026R   |
| <b>Purity</b>             | Protein A/G affinity  |
| <b>UniProt</b>            | Q12834  |
| <b>Localization</b>       | Cytoplasm   |
| <b>Applications</b>       | Immunohistochemistry (FFPE) : 1-2ug/ml                              |
| <b>Limitations</b>        | This recombinant Cdc20 antibody is available for research use only. |



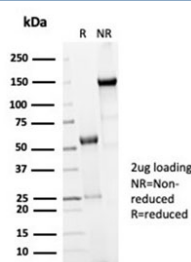
IHC staining of FFPE human kidney tissue with recombinant Cdc20 antibody CDC20/7026R) at 2ug/ml. HIER: boil tissue sections in pH 9 10mM Tris with 1mM EDTA for 20 min and allow to cool before testing.



IHC staining of FFPE human kidney carcinoma tissue with recombinant Cdc20 antibody (clone CDC20/7026R) at 2ug/ml. HIER: boil tissue sections in pH 9 10mM Tris with 1mM EDTA for 20 min and allow to cool before testing.



Negative control: IHC staining of FFPE human brain tissue with recombinant Cdc20 antibody (clone CDC20/7026R) at 2ug/ml in PBS for 30min RT. HIER: boil tissue sections in pH 9 10mM Tris with 1mM EDTA for 20 min and allow to cool before testing.



SDS-PAGE analysis of purified, BSA-free recombinant Cdc20 antibody (clone CDC20/7026R) as confirmation of integrity and purity.

## Description

Required for full ubiquitin ligase activity of the anaphase promoting complex/cyclosome (APC/C) and may confer substrate specificity upon the complex. Is regulated by MAD2L1: in metaphase the MAD2L1-CDC20-APC/C ternary complex is inactive and in anaphase the CDC20-APC/C binary complex is active in degrading substrates. The CDC20-APC/C complex positively regulates the formation of synaptic vesicle clustering at active zone to the presynaptic membrane in postmitotic neurons. CDC20-APC/C-induced degradation of NEUROD2 induces presynaptic differentiation. [UniProt]

## Application Notes

Optimal dilution of the recombinant Cdc20 antibody should be determined by the researcher.

## Immunogen

Recombinant human Cdc20 protein was used as the immunogen for the recombinant Cdc20 antibody.

## Storage

Aliquot the recombinant Cdc20 antibody and store frozen at -20oC or colder. Avoid repeated freeze-thaw cycles.

