

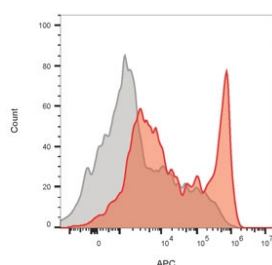
Recombinant CD8A Antibody [clone CD8/3892R] (V8521)

Catalog No.	Formulation	Size
V8521-100UG	0.2 mg/ml in 1X PBS with 0.1 mg/ml BSA (US sourced) and 0.05% sodium azide	100 ug
V8521-20UG	0.2 mg/ml in 1X PBS with 0.1 mg/ml BSA (US sourced) and 0.05% sodium azide	20 ug
V8521SAF-100UG	1 mg/ml in 1X PBS; BSA free, sodium azide free	100 ug

Recombinant **RABBIT MONOCLONAL**

[Bulk quote request](#)

Availability	1-3 business days
Species Reactivity	Human
Format	Purified
Host	Rabbit
Clonality	Recombinant Rabbit Monoclonal
Isotype	Rabbit IgG
Clone Name	CD8/3892R
Purity	Protein A affinity chromatography
UniProt	P01732
Localization	Cell surface
Applications	ELISA : order Ab without BSA for coating Flow Cytometry : 1-2ug/million cells
Limitations	This recombinant CD8A antibody is available for research use only.



Flow cytometry staining of human lymphocyte-gated PBM cells with recombinant CD8A antibody; Red=recombinant CD8A, Gray= isotype control.

Description

This MAb is specific for the 32kDa alpha chain of human CD8, known as CD8a or CD8 alpha. CD8 is a cell surface receptor expressed either as a heterodimer with the CD8 beta chain (CD8 alpha/beta) or as a homodimer (CD8 alpha/alpha). A majority of thymocytes and a subpopulation of mature T cells and NK cells express CD8a. CD8 binds to MHC class 1 and through its association with protein tyrosine kinase p56lck plays a role in T cell development and activation of mature T cells. For mature T-cells, CD4 and CD8 are mutually exclusive, so anti-CD8, generally used in conjunction with anti-CD4. It is a useful marker for distinguishing helper/inducer T-lymphocytes, and most peripheral T-cell lymphomas are CD4+/CD8-. Anaplastic large cell lymphoma is usually CD4+ and CD8-, and in T-lymphoblastic lymphoma/leukemia, CD4 and CD8 are often co-expressed. CD8 is also found in littoral cell angioma of the spleen.

Application Notes

Optimal dilution of the recombinant CD8A antibody should be determined by the researcher.

Immunogen

Recombinant human full-length protein was used as the immunogen for the recombinant CD8A antibody.

Storage

Store the recombinant CD8A antibody at 2-8oC (with azide) or aliquot and store at -20oC or colder (without azide).