

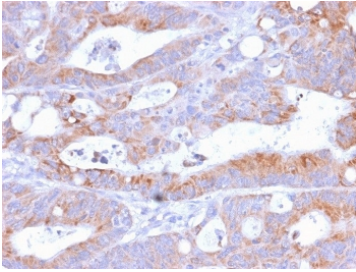
Recombinant CD86 Antibody [clone C86/2160R] (V3555)

Catalog No.	Formulation	Size
V3555-100UG	0.2 mg/ml in 1X PBS with 0.1 mg/ml BSA (US sourced) and 0.05% sodium azide	100 ug
V3555-20UG	0.2 mg/ml in 1X PBS with 0.1 mg/ml BSA (US sourced) and 0.05% sodium azide	20 ug
V3555SAF-100UG	1 mg/ml in 1X PBS; BSA free, sodium azide free	100 ug
V3555IHC-7ML	Prediluted in 1X PBS with 0.1 mg/ml BSA (US sourced) and 0.05% sodium azide; *For IHC use only*	7 ml

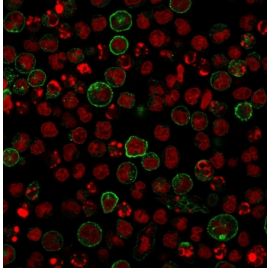
Recombinant **RABBIT MONOCLONAL**

[Bulk quote request](#)

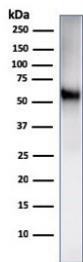
Availability	1-3 business days
Species Reactivity	Human
Format	Purified
Host	Rabbit
Clonality	Recombinant Rabbit Monoclonal
Isotype	Rabbit IgG, kappa
Clone Name	C86/2160R
Purity	Protein A affinity chromatography
UniProt	P42081
Localization	Cytoplasmic, membrane
Applications	ELISA : 2-4ug/ml (order BSA/azide-free format) Flow Cytometry : 1-2ug/million cells Immunofluorescence : 1-2ug/ml Western Blot : 1-2ug/ml Immunohistochemistry (FFPE) : 1-2ug/ml for 30 min at RT
Limitations	This recombinant CD86 antibody is available for research use only.



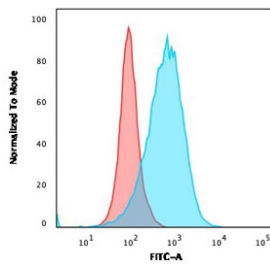
IHC testing of FFPE human colon with recombinant CD86 antibody (C86/2160R). Required HIER: boil tissue sections in 10mM Tris buffer with 1mM EDTA, pH 9.0, for 10-20 min followed by cooling at RT for 20 min.



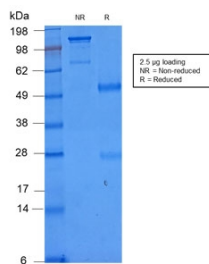
IF/ICC staining of human Raji cells with recombinant CD86 antibody (green) and Reddot nuclear stain (red).



Western blot testing of human Ramos cell lysate with recombinant CD86 antibody. Expected molecular weight: 38-70 kDa depending on glycosylation level.



Flow cytometry testing of human Ramos cells with recombinant CD86 antibody (blue, clone C86/2160R) and isotype control (red).



SDS-PAGE analysis of purified, BSA-free recombinant CD86 antibody (clone C86/2160R) as confirmation of integrity and purity.

Description

Recognizes a protein of 70kDa, which is identified as CD86. CD86 is a type I transmembrane glycoprotein and a member of the immunoglobulin superfamily of cell surface receptors. It is expressed at high levels on resting peripheral monocytes and dendritic cells and at very low density on resting B and T lymphocytes. CD86 expression is rapidly upregulated by B cell specific stimuli with peak expression at 18 to 42 hours after stimulation. CD86, along with CD80/B71, is an important accessory molecule in T cell co-stimulation via its interaction with CD28 and CD152/CTLA4. Since CD86 has rapid kinetics of induction, it is believed to be the major CD28 ligand expressed early in the immune response. It is also found on malignant Hodgkin and Reed Sternberg (HRS) cells in Hodgkin's disease.

Application Notes

Optimal dilution of the recombinant CD86 antibody should be determined by the researcher.

1. The prediluted format is supplied in a dropper bottle and is optimized for use in IHC. After epitope retrieval step (if required), drip mAb solution onto the tissue section and incubate at RT for 30 min.

Immunogen

Recombinant human full-length protein was used as the immunogen for the recombinant CD86 antibody.

Storage

Store the recombinant CD86 antibody at 2-8oC (with azide) or aliquot and store at -20oC or colder (without azide).