

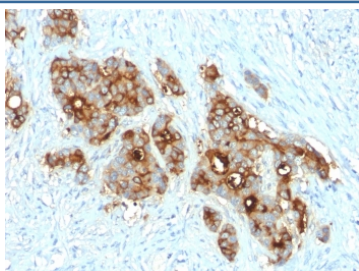
## Recombinant CD66 Antibody / CEA / CEACAM5 [clone C66/2055R] (V3599)

Catalog No.	Formulation	Size
V3599-100UG	0.2 mg/ml in 1X PBS with 0.1 mg/ml BSA (US sourced) and 0.05% sodium azide	100 ug
V3599-20UG	0.2 mg/ml in 1X PBS with 0.1 mg/ml BSA (US sourced) and 0.05% sodium azide	20 ug
V3599SAF-100UG	1 mg/ml in 1X PBS; BSA free, sodium azide free	100 ug
V3599IHC-7ML	Prediluted in 1X PBS with 0.1 mg/ml BSA (US sourced) and 0.05% sodium azide; *For IHC use only*	7 ml

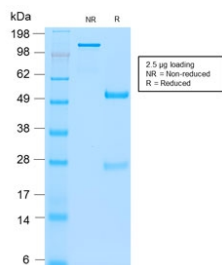
Recombinant **RABBIT MONOCLONAL**

[Bulk quote request](#)

<b>Species Reactivity</b>	Human
<b>Format</b>	Purified
<b>Host</b>	Rabbit
<b>Clonality</b>	Recombinant Rabbit Monoclonal
<b>Isotype</b>	Rabbit IgG, kappa
<b>Clone Name</b>	C66/2055R
<b>Purity</b>	Protein A affinity chromatography
<b>UniProt</b>	P06731
<b>Localization</b>	Cytoplasmic and luminal surface
<b>Applications</b>	Immunohistochemistry (FFPE) : 1-2ug/ml for 30 min at RT (1) (2)
<b>Limitations</b>	This recombinant CD66 antibody is available for research use only.



IHC testing of FFPE human colon carcinoma with CD66 antibody (clone C66/2055R). Required HIER: boil tissue sections in pH 9 10mM Tris with 1mM EDTA for 10-20 min followed by cooling at RT for 20 min.



SDS-PAGE analysis of purified, BSA-free recombinant CD66 antibody (clone C66/2055R) as confirmation of integrity and purity.

## Description

CEA are glycosyl phosphatidyl inositol (GPI) cell-surface-anchored glycoproteins whose specialized sialofucosylated glycoforms serve as functional colon carcinoma L-selectin and E-selectin ligands, which may be critical to the metastatic dissemination of colon carcinoma cells. Immunologically they are characterized as members of the CD66 cluster of differentiation. [Wiki]

## Application Notes

Optimal dilution of the recombinant CD66 antibody should be determined by the researcher..

1. The prediluted format is supplied in a dropper bottle and is optimized for use in IHC. After epitope retrieval step (if required), drip mAb solution onto the tissue section and incubate at RT for 30 min.

## Immunogen

Recombinant human protein was used as the immunogen for this recombinant CD66 antibody.

## Storage

Store the recombinant CD66 antibody at 2-8°C (with azide) or aliquot and store at -20°C or colder (without azide).

## References (4)