

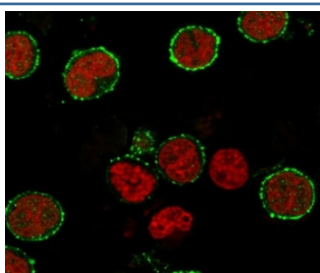
## Recombinant CD6 Antibody [clone CDLA6-2R] (V7372)

Catalog No.	Formulation	Size
V7372-100UG	0.2 mg/ml in 1X PBS with 0.1 mg/ml BSA (US sourced) and 0.05% sodium azide	100 ug
V7372-20UG	0.2 mg/ml in 1X PBS with 0.1 mg/ml BSA (US sourced) and 0.05% sodium azide	20 ug
V7372SAF-100UG	1 mg/ml in 1X PBS; BSA free, sodium azide free	100 ug
V7372IHC-7ML	Prediluted in 1X PBS with 0.1 mg/ml BSA (US sourced) and 0.05% sodium azide; *For IHC use only*	7 ml

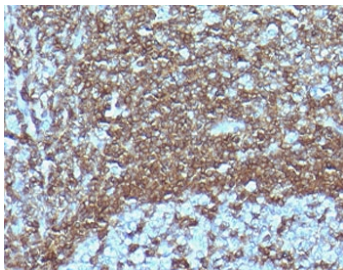
Recombinant **RABBIT MONOCLONAL**

[Bulk quote request](#)

<b>Availability</b>	1-3 business days
<b>Species Reactivity</b>	Human
<b>Format</b>	Purified
<b>Clonality</b>	Recombinant Rabbit Monoclonal
<b>Isotype</b>	Rabbit IgG, kappa
<b>Clone Name</b>	CDLA6-2R
<b>Purity</b>	Protein A affinity chromatography
<b>UniProt</b>	P30203
<b>Localization</b>	Cell surface and Cytoplasmic
<b>Applications</b>	Immunofluorescence : 1-2ug/ml Immunohistochemistry (FFPE) : 1-2ug/ml for 30 min at RT Prediluted IHC Only Format : incubate for 30 min at RT (1)
<b>Limitations</b>	This recombinant CD6 antibody is available for research use only.



Immunofluorescent staining of human MOLT4 cells with CD6 antibody (clone CDLA6-2R, green) and Reddot nuclear stain (red).



IHC staining of FFPE human tonsil tissue with recombinant CD6 antibody (clone CDLA6-2R). HIER: boil tissue sections in pH6, 10mM citrate buffer, for 10-20 min followed by cooling at RT for 20 min.

## Description

This gene encodes a protein found on the outer membrane of T-lymphocytes as well as some other immune cells. CD6 contains three scavenger receptor cysteine-rich (SRCR) domains and a binding site for an activated leukocyte cell adhesion molecule. It is important for continuation of T cell activation. This gene may be associated with susceptibility to multiple sclerosis. Multiple transcript variants encoding different isoforms have been found for this gene. [RefSeq]

## Application Notes

The optimal dilution of the recombinant CD6 antibody for each application should be determined by the researcher.

1. The prediluted format is supplied in a dropper bottle and is optimized for use in IHC. After epitope retrieval step (if required), drip mAb solution onto the tissue section and incubate at RT for 30 min.

## Immunogen

Full length recombinant human protein was used as the immunogen for this recombinant CD6 antibody.

## Storage

Store the recombinant CD6 antibody at 2-8°C (with azide) or aliquot and store at -20°C or colder (without azide).