

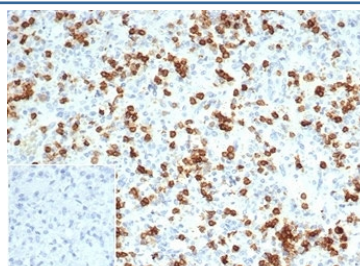
## Recombinant CD6 Antibody [clone C6/7022R] (V8823)

| Catalog No.    | Formulation   | Size   |
|----------------|---|--------|
| V8823-100UG    | 0.2 mg/ml in 1X PBS with 0.1 mg/ml BSA (US sourced), 0.05% sodium azide | 100 ug |
| V8823-20UG     | 0.2 mg/ml in 1X PBS with 0.1 mg/ml BSA (US sourced), 0.05% sodium azide | 20 ug  |
| V8823SAF-100UG | 1 mg/ml in 1X PBS; BSA free, sodium azide free                          | 100 ug |

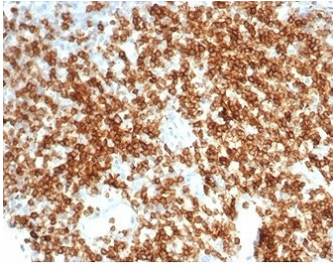
Recombinant **RABBIT MONOCLONAL**

[Bulk quote request](#)

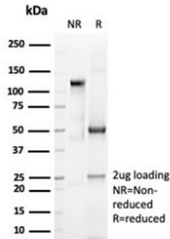
|                    |   |
|--------------------|---|
| Availability       | 1-3 business days   |
| Species Reactivity | Human   |
| Format             | Purified  |
| Clonality          | Recombinant Rabbit Monoclonal                                     |
| Isotype            | Rabbit IgG  |
| Clone Name         | C6/7022R  |
| Purity             | Protein A/G affinity  |
| UniProt            | P30203  |
| Localization       | Cell surface, Cytoplasm   |
| Applications       | Immunohistochemistry (FFPE) : 1-2ug/ml                            |
| Limitations        | This recombinant CD6 antibody is available for research use only. |



IHC staining of FFPE human spleen tissue with recombinant CD6 antibody (clone C6/7022R) at 2ug/ml in PBS for 30min RT. Negative control inset: PBS used instead of primary antibody to control for secondary Ab binding. HIER: boil tissue sections in pH 9 10mM Tris with 1mM EDTA for 20 min and allow to cool before testing.



IHC staining of FFPE human tonsil tissue with recombinant CD6 antibody (clone C6/7022R). HIER: boil tissue sections in pH 9 10mM Tris with 1mM EDTA for 20 min and allow to cool before testing.



SDS-PAGE analysis of purified, BSA-free recombinant CD6 antibody (C6/7022R) as confirmation of integrity and purity.

## Description

CD6 is a cell adhesion molecule that mediates cell-cell contacts and regulates T-cell responses via its interaction with ALCAM/CD166. [UniProt]

## Application Notes

Optimal dilution of the recombinant CD6 antibody should be determined by the researcher.

## Immunogen

Human recombinant full-length CD6 protein was used as the immunogen for the recombinant CD6 antibody.

## Storage

Aliquot the recombinant CD6 antibody and store frozen at -20°C or colder. Avoid repeated freeze-thaw cycles.