

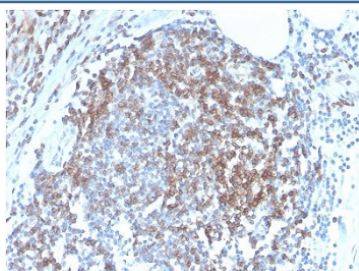
Recombinant CD6 Antibody [clone C6/2884R] (V7379)

Catalog No.	Formulation	Size
V7379-100UG	0.2 mg/ml in 1X PBS with 0.1 mg/ml BSA (US sourced) and 0.05% sodium azide	100 ug
V7379-20UG	0.2 mg/ml in 1X PBS with 0.1 mg/ml BSA (US sourced) and 0.05% sodium azide	20 ug
V7379SAF-100UG	1 mg/ml in 1X PBS; BSA free, sodium azide free	100 ug
V7379IHC-7ML	Prediluted in 1X PBS with 0.1 mg/ml BSA (US sourced) and 0.05% sodium azide; *For IHC use only*	7 ml

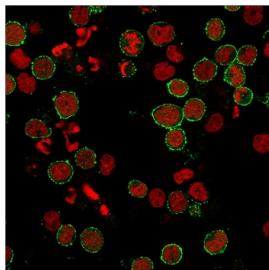
Recombinant **RABBIT MONOCLONAL**

[Bulk quote request](#)

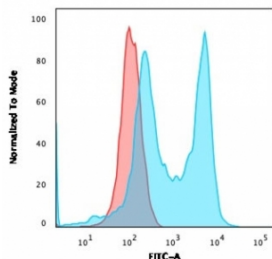
Availability	1-3 business days
Species Reactivity	Human
Format	Purified
Clonality	Recombinant Rabbit Monoclonal
Isotype	Rabbit IgG, kappa
Clone Name	C6/2884R
Purity	Protein A affinity chromatography
UniProt	P30203
Localization	Cell surface and Cytoplasmic
Applications	Flow Cytometry : 1-2ug/ml Immunofluorescence : 1-2ug/ml Immunohistochemistry (FFPE) : 0.5-1ug/ml for 30 min at RT
Limitations	This recombinant CD6 antibody is available for research use only.



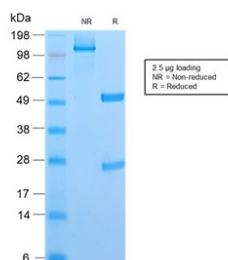
IHC staining of FFPE human tonsil tissue with recombinant CD6 antibody (clone C6/2884R). HIER: boil tissue sections in pH6, 10mM citrate buffer, for 10-20 min followed by cooling at RT for 20 min.



Immunofluorescent staining of human MOLT4 cells with CD6 antibody (clone C6/2884R, green) and Reddot nuclear stain (red).



Flow cytometry testing of human MOLT4 cells with CD6 antibody (clone C6/2884R); Red=isotype control, Blue= CD6 antibody.



SDS-PAGE analysis of purified, BSA-free recombinant CD6 antibody (clone C6/2884R) as confirmation of integrity and purity.

Description

CD6 is a type I transmembrane glycoprotein that contains a 24-amino acid signal sequence, three extracellular 'scavenger receptor cysteine-rich' (SRCR) domains, a membrane-spanning domain and a 44-amino acid cytoplasmic domain. The CD6 glycoprotein is tyrosine phosphorylated during TCR-mediated T cell activation. CD6 shows significant homology to CD5. CD6 is present on mature thymocytes, peripheral T cells and a subset of B cells. Antibodies to CD6 are used to deplete T cells from bone marrow transplants to prevent graft versus host disease.

Application Notes

The optimal dilution of the recombinant CD6 antibody for each application should be determined by the researcher.

1. The prediluted format is supplied in a dropper bottle and is optimized for use in IHC. After epitope retrieval step (if required), drip mAb solution onto the tissue section and incubate at RT for 30 min.

Immunogen

Human recombinant protein was used as the immunogen for this recombinant CD6 antibody.

Storage

Store the recombinant CD6 antibody at 2-8°C (with azide) or aliquot and store at -20°C or colder (without azide).

