

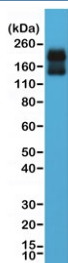
Recombinant CD56 Antibody / C-Terminal [clone RM315] (R20334)

Catalog No.	Formulation	Size
R20334-0.1ML	Antibody in PBS with 50% glycerol, 1% BSA and 0.09% sodium azide	100 ul

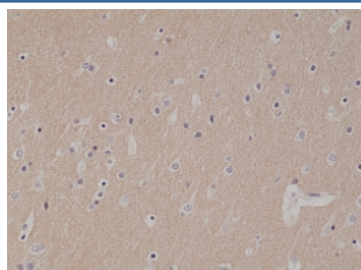
Recombinant **RABBIT MONOCLONAL**

[Bulk quote request](#)

Availability	1-3 business days
Species Reactivity	Human
Format	Purified
Host	Rabbit
Clonality	Recombinant Rabbit Monoclonal
Isotype	Rabbit IgG
Clone Name	RM315
Purity	Protein A purified from animal origin-free supernatant
UniProt	P13591
Localization	Cytoplasmic, membranous, secreted
Applications	Immunohistochemistry (FFPE) : 1:500-1:1000 Western Blot : 1:1000-1:2000
Limitations	This recombinant CD56 antibody is available for research use only.



Western blot testing of human brain lysate with recombinant CD56 antibody at 1:2000 dilution. Predicted molecular weight: ~110 kDa (soluble fragment), ~120/125 kDa (GPI-anchored), 140/180 kDa (transmembrane isoforms).



IHC testing of formalin fixed and paraffin embedded human brain tissue with recombinant CD56 antibody at 1:1000 dilution. HIER: steam section in pH6 citrate buffer for 20 min and allow to cool prior to staining.

Description

CD56, also called NCAM1 and Neural cell adhesion molecule 1, is a cell adhesion molecule involved in neuron-neuron adhesion, neurite fasciculation, outgrowth of neurites, etc. Acts as a receptor for rabies virus. [UniProt]

Application Notes

The stated application concentrations are suggested starting points. Titration of the recombinant CD56 antibody may be required due to differences in protocols and secondary/substrate sensitivity.

Immunogen

A peptide corresponding to the C-terminus of human CD56 was used as the immunogen for the recombinant CD56 antibody.

Storage

Store the recombinant CD56 antibody at -20°C.