

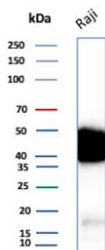
## Recombinant CD48 Antibody [clone CD48/8360R] (V4698)

Catalog No.	Formulation	Size
V4698-100UG	0.2 mg/ml in 1X PBS with 0.1 mg/ml BSA (US sourced), 0.05% sodium azide	100 ug
V4698-20UG	0.2 mg/ml in 1X PBS with 0.1 mg/ml BSA (US sourced), 0.05% sodium azide	20 ug
V4698SAF-100UG	1 mg/ml in 1X PBS; BSA free, sodium azide free	100 ug

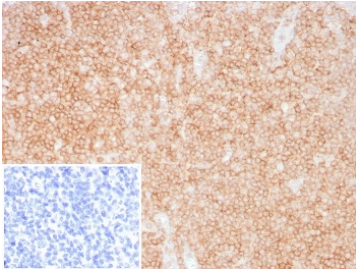
Recombinant **RABBIT MONOCLONAL**

[Bulk quote request](#)

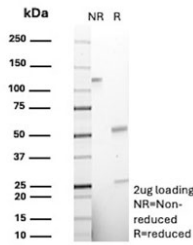
<b>Availability</b>	1-3 business days
<b>Species Reactivity</b>	Human
<b>Format</b>	Purified
<b>Host</b>	Rabbit
<b>Clonality</b>	Recombinant Rabbit Monoclonal
<b>Isotype</b>	Rabbit IgG, kappa
<b>Clone Name</b>	CD48/8360R
<b>Purity</b>	Protein A/G affinity
<b>UniProt</b>	P09326
<b>Localization</b>	Cell surface
<b>Applications</b>	Immunohistochemistry (FFPE) : 1-2ug/ml for 30 min at RT Western Blot : 2-4ug/ml
<b>Limitations</b>	This recombinant CD48 antibody is available for research use only.



Western blot testing of human Raji cell lysate with recombinant CD48 antibody.  
Expected molecular weight: 28-50 kDa depending on glycosylation level.



IHC staining of FFPE human tonsil tissue with recombinant CD48 antibody (clone CD48/8360R). Inset: PBS used in place of primary Ab (secondary Ab negative control).  
HIER: boil tissue sections in pH 9 10mM Tris with 1mM EDTA for 20 min and allow to cool before testing.



SDS-PAGE analysis of purified, BSA-free recombinant CD48 antibody (clone CD48/8360R) as confirmation of integrity and purity.

## Description

Reacts with human CD48, a 45kDa glycosyl phosphatidyl-inositol (GPI)-anchored cell surface protein. CD48 is strongly expressed on lymphocytes and monocytes and weakly on granulocytes but is absent on platelets, fibroblasts, epithelium and endothelium. CD48 is one of marker for detecting the defects of GPI anchoring structure on the patients with paroxysmal nocturnal hemoglobinuria (PNH) and serves as a low affinity ligand for CD2.

## Application Notes

Optimal dilution of the recombinant CD48 antibody should be determined by the researcher.

## Immunogen

A recombinant partial protein sequence (within amino acids 59-178) from the human protein was used as the immunogen for the recombinant CD48 antibody.

## Storage

Aliquot the recombinant CD48 antibody and store frozen at -20oC or colder. Avoid repeated freeze-thaw cycles.