

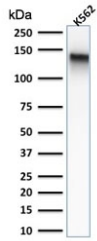
Recombinant CD43 Antibody [clone rSPN/839] (V3653)

Catalog No.	Formulation	Size
V3653-100UG	0.2 mg/ml in 1X PBS with 0.1 mg/ml BSA (US sourced) and 0.05% sodium azide	100 ug
V3653-20UG	0.2 mg/ml in 1X PBS with 0.1 mg/ml BSA (US sourced) and 0.05% sodium azide	20 ug
V3653SAF-100UG	1 mg/ml in 1X PBS; BSA free, sodium azide free	100 ug
V3653IHC-7ML	Prediluted in 1X PBS with 0.1 mg/ml BSA (US sourced) and 0.05% sodium azide; *For IHC use only*	7 ml

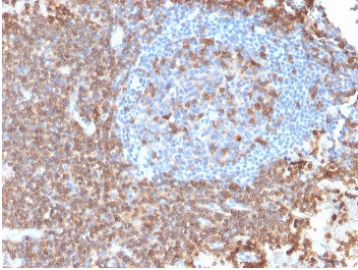
Recombinant **MOUSE MONOCLONAL**

[Bulk quote request](#)

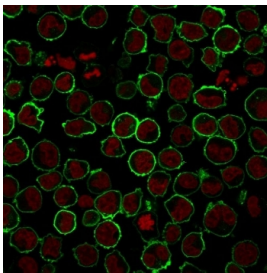
Availability	1-3 business days
Species Reactivity	Human
Format	Purified
Host	Mouse
Clonality	Recombinant Mouse Monoclonal
Isotype	Mouse IgG1, kappa
Clone Name	rSPN/839
Purity	Protein G affinity chromatography
UniProt	P16150
Localization	Cell surface
Applications	Flow Cytometry : 1-2ug/10 ⁶ cells Western Blot : 1-2ug/ml Immunofluorescence : 1-2ug/ml Immunohistochemistry (FFPE) : 1-2ug/ml for 30 min at RT
Limitations	This recombinant CD43 antibody is available for research use only.



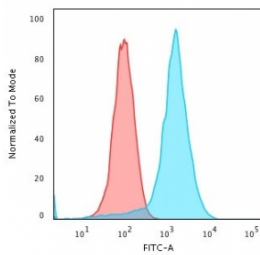
Western blot testing of human K562 cell lysate with recombinant CD43 antibody (clone rSPN/839). Expected molecular weight: 45-135 kDa depending on glycosylation level.



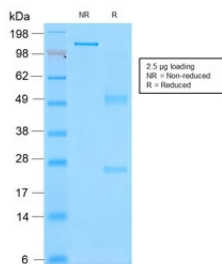
IHC testing of FFPE human lymph node with recombinant CD43 antibody (clone rSPN/839). Required HIER: boil tissue sections in pH 9 10mM Tris with 1mM EDTA for 10-20 min followed by cooling at RT for 20 min.



Immunofluorescence staining of human K562 cells with recombinant CD43 antibody (green, clone rSPN/839) and Reddot nuclear stain (red).



Flow cytometry testing of human K562 cells with recombinant CD43 antibody (clone rSPN/839); Red=isotype control, Blue= CD43 antibody.



SDS-PAGE analysis of purified, BSA-free recombinant CD43 antibody (clone rSPN/839) as confirmation of integrity and purity.

Description

It recognizes a cell surface glycoprotein of 95/115/135kDa (depending upon the extent of glycosylation), identified as CD43 [Workshop IV]. Epitope of mAb Bra7G is clearly different from that of mAb rSPN/839, called 'b' as opposed to 'a' for rSPN/839. 70-90% of T-cell lymphomas and from 22-37% of B-cell lymphomas express CD43. No reactivity has been observed with reactive B-cells. So a B-lineage population that co-expresses CD43 is highly likely to be a malignant lymphoma, especially a low-grade lymphoma, rather than a reactive B-cell population. When CD43 antibody is used in combination with anti-CD20, effective immunophenotyping of the lymphomas in formalin-fixed tissues can be obtained. Co-staining of a lymphoid infiltrate with anti-CD20 and anti-CD43 argues against a reactive process and favors a diagnosis of lymphoma.

Application Notes

Optimal dilution of the recombinant CD43 antibody should be determined by the researcher.

1. The prediluted format is supplied in a dropper bottle and is optimized for use in IHC. After epitope retrieval step (if required), drip mAb solution onto the tissue section and incubate at RT for 30 min.

Immunogen

Recombinant human protein was used as the immunogen for the recombinant CD43 antibody.

Storage

Store the recombinant CD43 antibody at 2-8oC (with azide) or aliquot and store at -20oC or colder (without azide).