

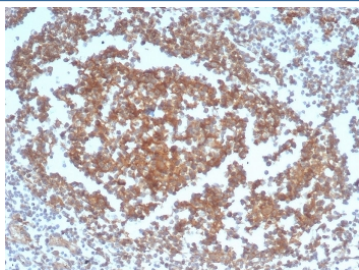
Recombinant CD40 Antibody [clone C40/4826R] (V8977)

Catalog No.	Formulation	Size
V8977-100UG	0.2 mg/ml in 1X PBS with 0.1 mg/ml BSA (US sourced), 0.05% sodium azide	100 ug
V8977-20UG	0.2 mg/ml in 1X PBS with 0.1 mg/ml BSA (US sourced), 0.05% sodium azide	20 ug
V8977SAF-100UG	1 mg/ml in 1X PBS; BSA free, sodium azide free	100 ug

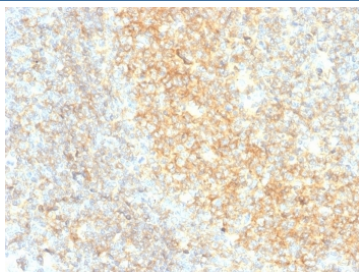
Recombinant **RABBIT MONOCLONAL**

[Bulk quote request](#)

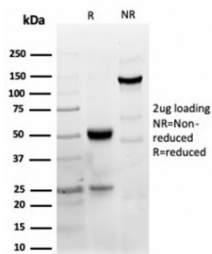
Availability	1-3 business days
Species Reactivity	Human
Format	Purified
Clonality	Recombinant Rabbit Monoclonal
Isotype	Rabbit IgG
Clone Name	C40/4826R
Purity	Protein A/G affinity
UniProt	P25942
Localization	Cell Surface, Secreted
Applications	Western Blot : 2-4ug/ml Immunohistochemistry (FFPE) : 1-2ug/ml
Limitations	This recombinant CD40 antibody is available for research use only.



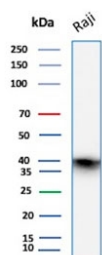
IHC staining of FFPE human tonsil tissue with recombinant CD40 antibody (clone C40/4826R). HIER: boil tissue sections in pH 9 10mM Tris with 1mM EDTA for 20 min and allow to cool before testing.



IHC staining of FFPE human tonsil tissue with recombinant CD40 antibody (clone C40/4826R). HIER: boil tissue sections in pH 9 10mM Tris with 1mM EDTA for 20 min and allow to cool before testing.



SDS-PAGE analysis of purified, BSA-free recombinant CD40 antibody (clone C40/4826R) as confirmation of integrity and purity.



Western blot testing of human Raji cell lysate with recombinant CD40 antibody. Expected molecular weight is 30-45 kDa depending on glycosylation level.

Description

CD40 is a receptor on antigen-presenting cells of the immune system and is essential for mediating a broad variety of immune and inflammatory responses including T cell-dependent immunoglobulin class switching, memory B cell development, and germinal center formation.

Application Notes

Optimal dilution of the recombinant CD40 antibody should be determined by the researcher.

Immunogen

A portion of amino acids 29-107 was used as the immunogen for the recombinant CD40 antibody.

Storage

Aliquot the recombinant CD40 antibody and store frozen at -20°C or colder. Avoid repeated freeze-thaw cycles.