

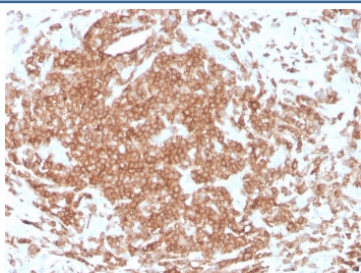
## Recombinant CD3e Antibody [clone rC3e/1308] (V8201)

Catalog No.	Formulation	Size
V8201-100UG	0.2 mg/ml in 1X PBS with 0.1 mg/ml BSA (US sourced) and 0.05% sodium azide	100 ug
V8201-20UG	0.2 mg/ml in 1X PBS with 0.1 mg/ml BSA (US sourced) and 0.05% sodium azide	20 ug
V8201SAF-100UG	1 mg/ml in 1X PBS; BSA free, sodium azide free	100 ug

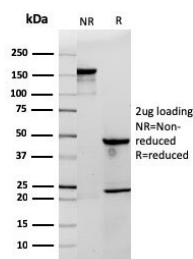
Recombinant **MOUSE MONOCLONAL**

[Bulk quote request](#)

Availability	1-3 business days
Species Reactivity	Human
Format	Purified
Clonality	Recombinant Mouse Monoclonal
Isotype	Mouse IgG1, kappa
Clone Name	rC3e/1308
Purity	Protein G affinity chromatography
UniProt	P07766
Localization	Cell surface, cytoplasmic
Applications	Immunohistochemistry (FFPE) : 1-2ug/ml
Limitations	This recombinant CD3e antibody is available for research use only.



IHC staining of FFPE human tonsil with recombinant CD3e antibody (clone rC3e/1308).  
 HIER: boil tissue sections in pH 9 10mM Tris with 1mM EDTA for 10-20 min and allow to cool before testing.



SDS-PAGE analysis of purified, BSA-free recombinant CD3e antibody (clone rC3e/1308) as confirmation of integrity and purity.

## Description

Recognizes the epsilon-chain of CD3, which consists of five different polypeptide chains (designated as gamma, delta, epsilon, zeta, and eta) with MW ranging from 16-28kDa. The CD3 complex is closely associated at the lymphocyte cell surface with the T cell antigen receptor (TCR). Reportedly, CD3 complex is involved in signal transduction to the T cell interior following antigen recognition. The CD3 antigen is first detectable in early thymocytes and probably represents one of the earliest signs of commitment to the T cell lineage. In cortical thymocytes, CD3 is predominantly intra-cytoplasmic. However, in medullary thymocytes, it appears on the T cell surface. CD3 antigen is a highly specific marker for T cells, and is present in majority of T cell neoplasms.

## Application Notes

Optimal dilution of the recombinant CD3e antibody should be determined by the researcher.

## Immunogen

A recombinant human full length protein was used as the immunogen for the recombinant CD3e antibody.

## Storage

Store the recombinant CD3e antibody at 2-8oC (with azide) or aliquot and store at -20oC or colder (without azide).