

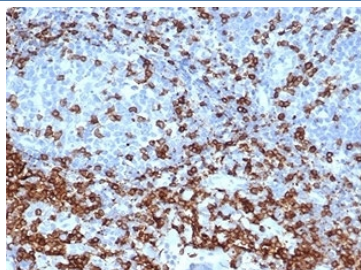
## Recombinant CD3e Antibody / CD3 epsilon [clone C3e/4652R] (V9459)

Catalog No.	Formulation	Size
V9459-100UG	0.2 mg/ml in 1X PBS with 0.1 mg/ml BSA (US sourced), 0.05% sodium azide	100 ug
V9459-20UG	0.2 mg/ml in 1X PBS with 0.1 mg/ml BSA (US sourced), 0.05% sodium azide	20 ug
V9459SAF-100UG	1 mg/ml in 1X PBS; BSA free, sodium azide free	100 ug

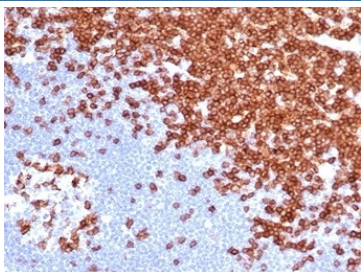
Recombinant **RABBIT MONOCLONAL**

[Bulk quote request](#)

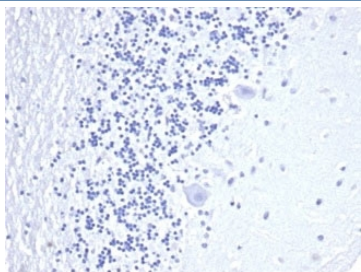
<b>Availability</b>	1-3 business days
<b>Species Reactivity</b>	Human
<b>Format</b>	Purified
<b>Host</b>	Rabbit
<b>Clonality</b>	Recombinant Rabbit Monoclonal
<b>Isotype</b>	Rabbit IgG
<b>Clone Name</b>	C3e/4652R
<b>Purity</b>	Protein A/G affinity
<b>UniProt</b>	P07766
<b>Localization</b>	Cell surface, Cytoplasm
<b>Applications</b>	ELISA : 2-4ug/ml (order BSA-free format for coating) Western Blot : 1-2ug/ml Immunohistochemistry (FFPE) : 1-2ug/ml
<b>Limitations</b>	This recombinant CD3e antibody is available for research use only.



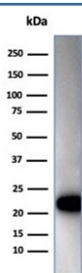
IHC staining of FFPE human tonsil tissue with recombinant CD3e antibody (clone C3e/4652R) at 2ug/ml in PBS for 30min RT. HIER: boil tissue sections in pH 9 10mM Tris with 1mM EDTA for 20 min and allow to cool before testing.



IHC staining of FFPE human lymph node tissue with recombinant CD3e antibody (clone C3e/4652R). HIER: boil tissue sections in pH 9 10mM Tris with 1mM EDTA for 20 min and allow to cool before testing.



Negative control: IHC staining of FFPE human brain tissue using recombinant CD3e antibody (clone C3e/4652R) at 2ug/ml in PBS for 30min RT. HIER: boil tissue sections in pH 9 10mM Tris with 1mM EDTA for 20 min and allow to cool before testing.



Western blot testing of human Jurkat cell lysate using recombinant CD3e antibody (clone C3e/4652R). Predicted molecular weight ~23 kDa.

## Description

CD3 consists of five different polypeptide chains (designated as gamma, delta, epsilon, zeta, and eta) with MW ranging from 16-28kDa. The CD3 complex is closely associated at the lymphocyte cell surface with the T cell antigen receptor (TCR). Reportedly, CD3 complex is involved in signal transduction to the T cell interior following antigen recognition. The CD3 antigen is first detectable in early thymocytes and probably represents one of the earliest signs of commitment to the T cell lineage. In cortical thymocytes, CD3 is predominantly intra-cytoplasmic. However, in medullary thymocytes, it appears on the T cell surface. CD3 antigen is a highly specific marker for T cells, and is present in majority of T cell neoplasms.

## Application Notes

Optimal dilution of the recombinant CD3e antibody should be determined by the researcher.

## Immunogen

A portion of amino acids aa 20-40 from the human protein was used as the immunogen for the recombinant CD3e antibody.

## Storage

Aliquot the recombinant CD3e antibody and store frozen at -20oC or colder. Avoid repeated freeze-thaw cycles.

