

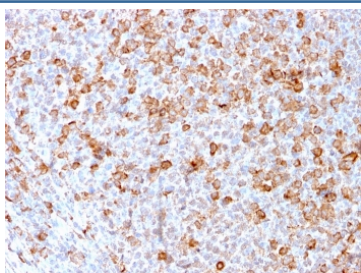
Recombinant CD3e Antibody [clone C3e/3171R] (V7591)

Catalog No.	Formulation	Size
V7591-100UG	0.2 mg/ml in 1X PBS with 0.1 mg/ml BSA (US sourced) and 0.05% sodium azide	100 ug
V7591-20UG	0.2 mg/ml in 1X PBS with 0.1 mg/ml BSA (US sourced) and 0.05% sodium azide	20 ug
V7591SAF-100UG	1 mg/ml in 1X PBS; BSA free, sodium azide free	100 ug

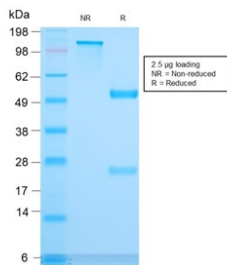
Recombinant **RABBIT MONOCLONAL**

[Bulk quote request](#)

Availability	1-3 business days
Species Reactivity	Human
Format	Purified
Host	Rabbit
Clonality	Recombinant Rabbit Monoclonal
Isotype	Rabbit IgG
Clone Name	C3e/3171R
Purity	Protein A affinity chromatography
UniProt	P07766
Localization	Cell surface, cytoplasmic
Applications	ELISA (order BSA-free Format For Coating) : Immunohistochemistry (FFPE) : 1-2ug/ml
Limitations	This recombinant CD3e antibody is available for research use only.



IHC staining of FFPE human tonsil with CD3e antibody (clone C3e/3171R). HIER: boil tissue sections in pH 9 10mM Tris with 1mM EDTA for 10-20 min and allow to cool before testing.



SDS-PAGE analysis of purified, BSA-free recombinant CD3e antibody (clone C3e/3171R) as confirmation of integrity and purity.

Description

Recognizes the epsilon-chain of CD3, which consists of five different polypeptide chains (designated as gamma, delta, epsilon, zeta, and eta) with MW ranging from 16-28kDa. The CD3 complex is closely associated at the lymphocyte cell surface with the T cell antigen receptor (TCR). Reportedly, CD3 complex is involved in signal transduction to the T cell interior following antigen recognition. The CD3 antigen is first detectable in early thymocytes and probably represents one of the earliest signs of commitment to the T cell lineage. In cortical thymocytes, CD3 is predominantly intra-cytoplasmic. However, in medullary thymocytes, it appears on the T cell surface. CD3 antigen is a highly specific marker for T cells, and is present in majority of T cell neoplasms.

A full range of CD3e antibody reagents for immunohistochemistry, western blot, and flow cytometry is available on our [CD3e Antibody](#) collection page.

Application Notes

Optimal dilution of the recombinant CD3e antibody should be determined by the researcher.

Immunogen

A recombinant human partial protein (amino acids 23-119) was used as the immunogen for the recombinant CD3e antibody.

Storage

Store the recombinant CD3e antibody at 2-8oC (with azide) or aliquot and store at -20oC or colder (without azide).