

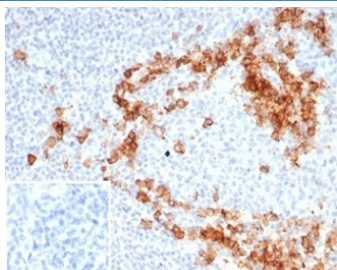
Recombinant CD38 Antibody [clone CD38/7017R] (V9439)

| Catalog No. | Formulation | Size |
|----------------|---|--------|
| V9439-100UG | 0.2 mg/ml in 1X PBS with 0.1 mg/ml BSA (US sourced), 0.05% sodium azide | 100 ug |
| V9439-20UG | 0.2 mg/ml in 1X PBS with 0.1 mg/ml BSA (US sourced), 0.05% sodium azide | 20 ug |
| V9439SAF-100UG | 1 mg/ml in 1X PBS; BSA free, sodium azide free | 100 ug |

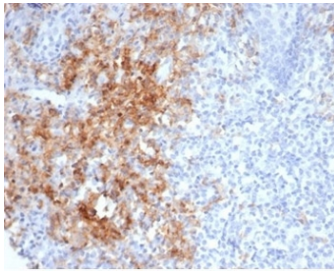
Recombinant **RABBIT MONOCLONAL**

[Bulk quote request](#)

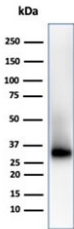
| | |
|---------------------------|--|
| Availability | 1-3 business days |
| Species Reactivity | Human |
| Format | Purified |
| Host | Rabbit |
| Clonality | Recombinant Rabbit Monoclonal |
| Isotype | Rabbit IgG, kappa |
| Clone Name | CD38/7017R |
| Purity | Protein A/G affinity |
| UniProt | P28907 |
| Localization | Cell Surface, Cytoplasm |
| Applications | Western Blot : 1-2ug/ml Immunohistochemistry (FFPE) : 1-2ug/ml |
| Limitations | This recombinant CD38 antibody is available for research use only. |



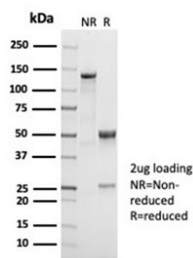
IHC staining of FFPE human tonsil tissue with recombinant CD38 antibody (clone CD38/7017R). Negative control inset: PBS instead of primary antibody to control for secondary binding. HIER: boil tissue sections in pH 9 10mM Tris with 1mM EDTA for 20 min and allow to cool before testing.



IHC staining of FFPE human tonsil tissue with recombinant CD38 antibody (clone CD38/7017R). HIER: boil tissue sections in pH 9 10mM Tris with 1mM EDTA for 20 min and allow to cool before testing.



Western blot testing of human Raji cell lysate with recombinant CD38 antibody. Expected molecular weight: 34-46 kDa depending on glycosylation level.



SDS-PAGE analysis of purified, BSA-free recombinant CD38 antibody (clone CD38/7017R) as confirmation of integrity and purity.

Description

CD38 is a type II transmembrane glycoprotein that is present on early B- and T-cell lineages and activated B- and T-cells but is absent from most mature resting peripheral lymphocytes. CD38 is found on thymocytes, pre-B cells, germinal center B-cells, mitogen-activated T-cells, monocytes and Ig-secreting plasma cells. CD38 is expressed on CD34+ cells. The CD34+CD38- population of hematopoietic stems cells define the most pluripotent cells (e.g. blast colony forming cells).

Application Notes

Optimal dilution of the recombinant CD38 antibody should be determined by the researcher.

Immunogen

A portion of amino acids 200-300 of human CD38 protein was used as the immunogen for the recombinant CD38 antibody.

Storage

Aliquot the recombinant CD38 antibody and store frozen at -20°C or colder. Avoid repeated freeze-thaw cycles.

