

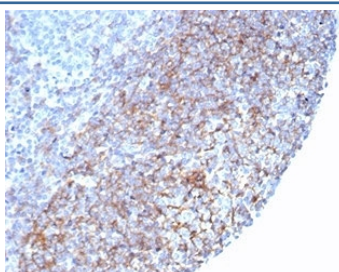
## Recombinant CD35 Antibody [clone rCR1/7289] (V9493)

| Catalog No.    | Formulation   | Size   |
|----------------|---|--------|
| V9493-100UG    | 0.2 mg/ml in 1X PBS with 0.1 mg/ml BSA (US sourced), 0.05% sodium azide | 100 ug |
| V9493-20UG     | 0.2 mg/ml in 1X PBS with 0.1 mg/ml BSA (US sourced), 0.05% sodium azide | 20 ug  |
| V9493SAF-100UG | 1 mg/ml in 1X PBS; BSA free, sodium azide free                          | 100 ug |

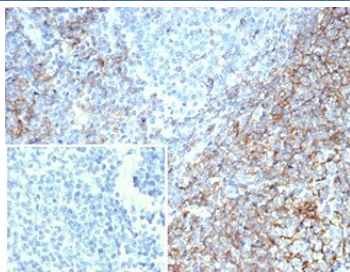
Recombinant **MOUSE MONOCLONAL**

[Bulk quote request](#)

|                           |  |
|---------------------------|--|
| <b>Availability</b>       | 1-3 business days  |
| <b>Species Reactivity</b> | Human  |
| <b>Format</b>             | Purified   |
| <b>Clonality</b>          | Recombinant Mouse Monoclonal                                       |
| <b>Isotype</b>            | Mouse IgG1, kappa  |
| <b>Clone Name</b>         | rCR1/7289  |
| <b>Purity</b>             | Protein A/G affinity   |
| <b>UniProt</b>            | P17927   |
| <b>Localization</b>       | Cell surface   |
| <b>Applications</b>       | Immunohistochemistry (FFPE) : 1-2ug/ml                             |
| <b>Limitations</b>        | This recombinant CD35 antibody is available for research use only. |



IHC staining of FFPE human tonsil tissue with recombinant CD35 antibody (clone rCR1/7289) at 2ug/ml. HIER: boil tissue sections in pH 9 10mM Tris with 1mM EDTA for 20 min and allow to cool before testing.



IHC staining of FFPE human tonsil tissue with recombinant CD35 antibody (clone rCR1/7289) at 2ug/ml. Negative control inset: PBS instead of primary antibody to control for secondary binding. HIER: boil tissue sections in pH 9 10mM Tris with 1mM EDTA for 20 min and allow to cool before testing.

## Description

CD35, complement receptor 1, is a cell membrane-bound, monomeric glycoprotein on numerous cell types including erythrocytes, leukocytes, glomerular podocytes, and follicular dendritic cells. The primary function of CD35 is to serve as the cellular receptor for C3b and C4b, the most important components of the complement system leading to clearance of foreign macromolecules. CD35 antigen is found on erythrocytes, B cells, a subset of T cells, monocytes, as well as eosinophils, and neutrophils. Anti-CD35 is considered a mature B-cell marker which labels follicular dendritic reticulum cells and tumors derived from such cells such as follicular dendritic cell tumor/sarcoma.

## Application Notes

Optimal dilution of the recombinant CD35 antibody should be determined by the researcher.

## Immunogen

Recombinant full-length human CD35 protein was used as the immunogen for the recombinant CD35 antibody.

## Storage

Aliquot the recombinant CD35 antibody and store frozen at -20oC or colder. Avoid repeated freeze-thaw cycles.