

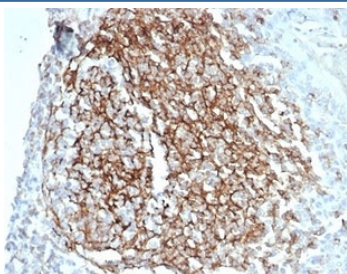
Recombinant CD35 Antibody [clone CR1/7016R] (V9522)

Catalog No.	Formulation	Size
V9522-100UG	0.2 mg/ml in 1X PBS with 0.1 mg/ml BSA (US sourced), 0.05% sodium azide	100 ug
V9522-20UG	0.2 mg/ml in 1X PBS with 0.1 mg/ml BSA (US sourced), 0.05% sodium azide	20 ug
V9522SAF-100UG	1 mg/ml in 1X PBS; BSA free, sodium azide free	100 ug

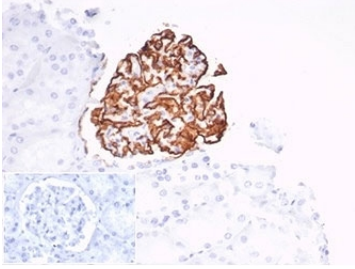
Recombinant **RABBIT MONOCLONAL**

[Bulk quote request](#)

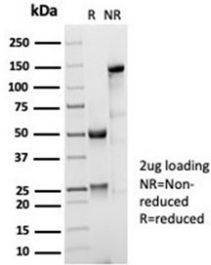
Availability	1-3 business days
Species Reactivity	Human
Format	Purified
Host	Rabbit
Clonality	Recombinant Rabbit Monoclonal
Isotype	Rabbit IgG, kappa
Clone Name	CR1/7016R
Purity	Protein A/G affinity
UniProt	P17927
Localization	Cell surface
Applications	Immunohistochemistry (FFPE) : 1-2ug/ml
Limitations	This recombinant CD35 antibody is available for research use only.



IHC staining of FFPE human spleen tissue with recombinant CD35 antibody (clone CD35/7016R) at 2ug/ml. HIER: boil tissue sections in pH 9 10mM Tris with 1mM EDTA for 20 min and allow to cool before testing.



IHC staining of FFPE human tonsil tissue with recombinant CD35 antibody (clone CD35/7016R) at 2ug/ml. Negative control inset: PBS used instead of primary antibody to control for secondary Ab binding. HIER: boil tissue sections in pH 9 10mM Tris with 1mM EDTA for 20 min and allow to cool before testing.



SDS-PAGE analysis of purified, BSA-free recombinant CD35 antibody (clone CR1/7016R) as confirmation of integrity and purity.

Description

CD35, complement receptor 1, is a cell membrane-bound, monomeric glycoprotein on numerous cell types including erythrocytes, leukocytes, glomerular podocytes, and follicular dendritic cells. The primary function of CD35 is to serve as the cellular receptor for C3b and C4b, the most important components of the complement system leading to clearance of foreign macromolecules. CD35 antigen is found on erythrocytes, B cells, a subset of T cells, monocytes, as well as eosinophils, and neutrophils. Anti-CD35 is considered a mature B-cell marker which labels follicular dendritic reticulum cells and tumors derived from such cells such as follicular dendritic cell tumor/sarcoma.

For a validated reference of CD35 expression highlighting follicular dendritic cell networks in lymphoid tissue, see [CD35 antibody clone CR1/6378](#) with supporting immunohistochemistry data.

Application Notes

Optimal dilution of the recombinant CD35 antibody should be determined by the researcher.

Immunogen

Recombinant full-length human CR1 protein was used as the immunogen for the recombinant CD35 antibody.

Storage

Aliquot the recombinant CD35 antibody and store frozen at -20°C or colder. Avoid repeated freeze-thaw cycles.