

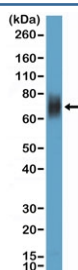
Recombinant CD33 Antibody [clone RM398] (R20414)

Catalog No.	Formulation	Size
R20414-0.1ML	Antibody in PBS with 50% glycerol, 1% BSA and 0.09% sodium azide	100 ul

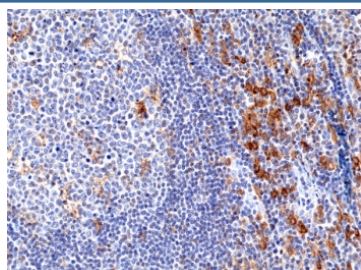
Recombinant **RABBIT MONOCLONAL**

[Bulk quote request](#)

Availability	1-3 business days
Species Reactivity	Human
Format	Purified
Host	Rabbit
Clonality	Recombinant Rabbit Monoclonal
Isotype	Rabbit IgG
Clone Name	RM398
Purity	Protein A purified from animal origin-free supernatant
UniProt	P20138
Localization	Cytoplasmic, membranous
Applications	Immunohistochemistry (FFPE) : 1:100-1:200 Western Blot : 1:100-1:200
Limitations	This recombinant CD33 antibody is available for research use only.



Western blot testing of human HL60 cell lysate with recombinant CD33 antibody at 1:100 dilution. Predicted molecular weight is 40-67 kDa depending on glycosylation level.



IHC staining of FFPE human tonsil tissue with recombinant CD33 antibody at 1:100.

Description

This antibody reacts to human CD33.

Application Notes

The stated application concentrations are suggested starting points. Titration of the recombinant CD33 antibody may be required due to differences in protocols and secondary/substrate sensitivity.

Immunogen

A peptide corresponding to human CD33 was used as the immunogen for the CD33 recombinant antibody.

Storage

Store the recombinant CD33 antibody at -20oC.