

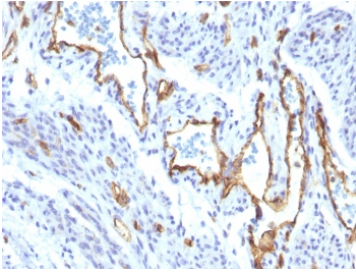
## Recombinant CD31 Antibody / Rabbit Monoclonal [clone C31/1395R] (V7243)

Catalog No.	Formulation	Size
V7243-100UG	0.2 mg/ml in 1X PBS with 0.1 mg/ml BSA (US sourced) and 0.05% sodium azide	100 ug
V7243-20UG	0.2 mg/ml in 1X PBS with 0.1 mg/ml BSA (US sourced) and 0.05% sodium azide	20 ug
V7243SAF-100UG	1 mg/ml in 1X PBS; BSA free, sodium azide free	100 ug
V7243IHC-7ML	Prediluted in 1X PBS with 0.1 mg/ml BSA (US sourced) and 0.05% sodium azide; *For IHC use only*	7 ml

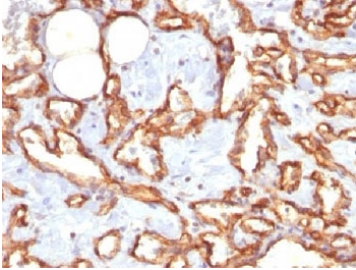
Recombinant **RABBIT MONOCLONAL**

[Bulk quote request](#)

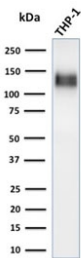
<b>Species Reactivity</b>	Human
<b>Format</b>	Purified
<b>Host</b>	Rabbit
<b>Clonality</b>	Recombinant Rabbit Monoclonal
<b>Isotype</b>	Rabbit IgG, kappa
<b>Clone Name</b>	C31/1395R
<b>Purity</b>	Protein A affinity
<b>UniProt</b>	P16284
<b>Gene ID</b>	5175
<b>Localization</b>	Cell surface and cytoplasmic
<b>Applications</b>	Western Blot : 1-2ug/ml Flow Cytometry : 1-2ug/10 <sup>6</sup> cells Immunohistochemistry (FFPE) : 1-2ug/ml for 30 min at RT
<b>Limitations</b>	This recombinant CD31 antibody is available for research use only.



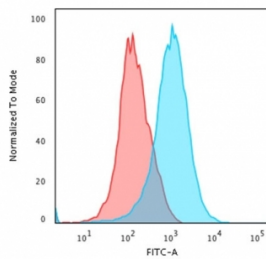
IHC staining of FFPE human angiocarcinoma with recombinant CD31 antibody (clone C31/1395R). Required HIER: boil tissue sections in 10mM Tris with 1mM EDTA, pH9, for 10-20 min followed by cooling at RT for 20 min.



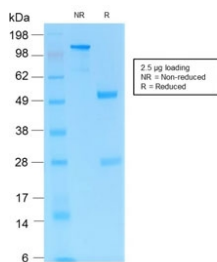
IHC staining of FFPE human angiocarcinoma with recombinant CD31 antibody (clone C31/1395R). Required HIER: boil tissue sections in 10mM Tris with 1mM EDTA, pH9, for 10-20 min followed by cooling at RT for 20 min.



Western blot testing of human ThP1 cell lysate with recombinant CD31 antibody (clone C31/1395R). Expected molecular weight: 83-130 kDa depending on level of glycosylation.



Flow cytometry testing of PFA-fixed human Jurkat cells with recombinant CD31 antibody (clone C31/1395R); Red=isotype control, Blue= recombinant CD31 antibody.



SDS-PAGE analysis of purified, BSA-free recombinant CD31 antibody (clone C31/1395R) as confirmation of integrity and purity.

## Description

CD31 is found on the surface of platelets, monocytes, neutrophils, and some types of T-cells, and makes up a large portion of endothelial cell intercellular junctions. It is a member of the immunoglobulin superfamily and is likely involved in leukocyte migration, angiogenesis, and integrin activation. [RefSeq]

## Application Notes

Titering of the recombinant CD31 antibody may be required for optimal performance.

1. The prediluted format is supplied in a dropper bottle and is optimized for use in IHC. After epitope retrieval step (if

required), drip mAb solution onto the tissue section and incubate at RT for 30 min.

## **Immunogen**

Human full length recombinant protein was used as the immunogen for the recombinant CD31 antibody.

## **Storage**

Store the recombinant CD31 antibody at 2-8oC (with azide) or aliquot and store at -20oC or colder (without azide).