

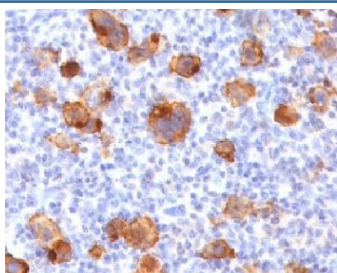
## Recombinant CD30 Antibody [clone rKi-1/779] (V3703)

Catalog No.	Formulation	Size
V3703-100UG	0.2 mg/ml in 1X PBS with 0.1 mg/ml BSA (US sourced) and 0.05% sodium azide	100 ug
V3703-20UG	0.2 mg/ml in 1X PBS with 0.1 mg/ml BSA (US sourced) and 0.05% sodium azide	20 ug
V3703SAF-100UG	1 mg/ml in 1X PBS; BSA free, sodium azide free	100 ug
V3703IHC-7ML	Prediluted in 1X PBS with 0.1 mg/ml BSA (US sourced) and 0.05% sodium azide; *For IHC use only*	7 ml

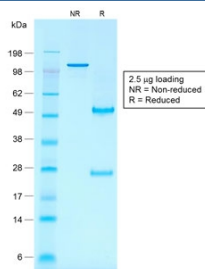
Recombinant **MOUSE MONOCLONAL**

[Bulk quote request](#)

Availability	1-3 business days
Species Reactivity	Human
Format	Purified
Host	Mouse
Clonality	Recombinant Mouse Monoclonal
Isotype	Mouse IgG1, kappa
Clone Name	rKi-1/779
Purity	Protein G affinity chromatography
UniProt	P28908
Localization	Cell surface, cytoplasmic
Applications	Immunohistochemistry (FFPE) : 0.5-1ug/ml for 30 min at RT
Limitations	This recombinant CD30 antibody is available for research use only.



IHC testing of FFPE human Hodgkin's lymphoma with recombinant CD30 antibody (clone rKi-1/779). Required HIER: boil tissue sections in 10mM Tris with 1mM EDTA, pH 9, for 10-20 min followed by cooling at RT for 20 min.



SDS-PAGE analysis of purified, BSA-free recombinant CD30 antibody (clone rKi-1/779) as confirmation of integrity and purity.

## Description

Recognizes a single chain glycoprotein of 105/120kDa, identified as CD30/Ki-1. CD30 is synthesized as a 90kDa precursor, which is processed in the Golgi complex into a membrane-bound phosphorylated mature 105/120kDa glycoprotein. In Hodgkin's disease, CD30/Ki-1 antigen is expressed by mononuclear-Hodgkin and multinucleated Reed-Sternberg cells. It is also expressed by the tumor cells of a majority of anaplastic large cell lymphomas as well as by a varying proportion of activated T and B cells. This mAb distinguishes large cell lymphomas derived from activated lymphoid cells from histiocytic malignancies and lymphomas derived from resting and precursor lymphoid cells or from anaplastic carcinomas. About one third of the CD30/Ki-1 positive lymphomas lack the leukocyte common antigen (CD45).

## Application Notes

Optimal dilution of the recombinant CD30 antibody should be determined by the researcher.

1. The prediluted format is supplied in a dropper bottle and is optimized for use in IHC. After epitope retrieval step (if required), drip mAb solution onto the tissue section and incubate at RT for 30 min.

## Immunogen

Recombinant full length human protein was used as the immunogen for the recombinant CD30 antibody.

## Storage

Store the recombinant CD30 antibody at 2-8°C (with azide) or aliquot and store at -20°C or colder (without azide).