

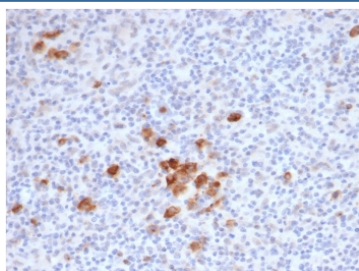
Recombinant CD30 Antibody [clone rKi-1/6913] (V9437)

| Catalog No. | Formulation | Size |
|----------------|---|--------|
| V9437-100UG | 0.2 mg/ml in 1X PBS with 0.1 mg/ml BSA (US sourced), 0.05% sodium azide | 100 ug |
| V9437-20UG | 0.2 mg/ml in 1X PBS with 0.1 mg/ml BSA (US sourced), 0.05% sodium azide | 20 ug |
| V9437SAF-100UG | 1 mg/ml in 1X PBS; BSA free, sodium azide free | 100 ug |

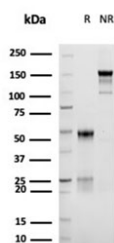
Recombinant **MOUSE MONOCLONAL**

[Bulk quote request](#)

| | |
|--------------------|--|
| Availability | 1-3 business days |
| Species Reactivity | Human |
| Format | Purified |
| Host | Mouse |
| Clonality | Recombinant Mouse Monoclonal |
| Isotype | Mouse IgG1, kappa |
| Clone Name | rKi-1/6913 |
| Purity | Protein A affinity |
| UniProt | P28908 |
| Localization | Cell Surface |
| Applications | Immunohistochemistry (FFPE) : 1-2ug/ml |
| Limitations | This recombinant CD30 antibody is available for research use only. |



IHC staining of FFPE human Hodgkins lymphoma tissue with recombinant CD30 antibody (clone rKi-1/6913) at 2ug/ml in PBS for 30min RT. Staining of Reed-Sternberg cells is observed. HIER: boil tissue sections in pH 9 10mM Tris with 1mM EDTA for 20 min and allow to cool before testing.



SDS-PAGE analysis of purified, BSA-free recombinant CD30 antibody (clone rKi-1/6913) as confirmation of integrity and purity.

Description

Recognizes a single chain glycoprotein of 105/120kDa, identified as CD30/Ki-1. Its epitope is located somewhere between aa 580-595 (cytoplasmic). CD30 is synthesized as a 90kDa precursor, which is processed in the Golgi complex into a membrane-bound phosphorylated mature 105/120kDa glycoprotein. In Hodgkin s disease, CD30/Ki-1 antigen is expressed by mononuclear-Hodgkin and multinucleated Reed-Sternberg cells. It is also expressed by the tumor cells of a majority of anaplastic large cell lymphomas as well as by a varying proportion of activated T and B cells. This MAb distinguishes large cell lymphomas derived from activated lymphoid cells from histiocytic malignancies and lymphomas derived from resting and precursor lymphoid cells or from anaplastic carcinomas. About one third of the Ki-1 positive lymphomas lack the leukocyte common antigen (CD45).

Application Notes

Optimal dilution of the recombinant CD30 antibody should be determined by the researcher.

Immunogen

A portion of amino acids 495-595 was used as the immunogen for the recombinant CD30 antibody.

Storage

Aliquot the recombinant CD30 antibody and store frozen at -20oC or colder. Avoid repeated freeze-thaw cycles.