

Recombinant CD3 epsilon Antibody [clone C3e/4653R] (V9434)

Catalog No.	Formulation	Size
V9434-100UG	0.2 mg/ml in 1X PBS with 0.1 mg/ml BSA (US sourced), 0.05% sodium azide	100 ug
V9434-20UG	0.2 mg/ml in 1X PBS with 0.1 mg/ml BSA (US sourced), 0.05% sodium azide	20 ug
V9434SAF-100UG	1 mg/ml in 1X PBS; BSA free, sodium azide free	100 ug

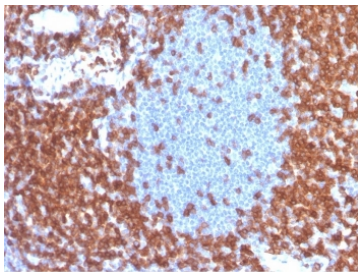
Recombinant **RABBIT MONOCLONAL**

[Bulk quote request](#)

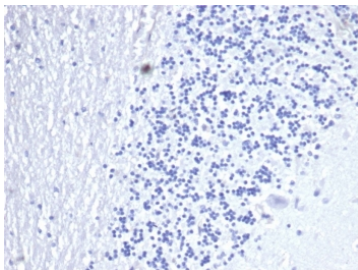
Availability	1-3 business days
Species Reactivity	Human
Format	Purified
Clonality	Recombinant Rabbit Monoclonal
Isotype	Rabbit IgG, kappa
Clone Name	C3e/4653R
Purity	Protein A/G affinity
UniProt	P07766
Localization	Cell Surface, Cytoplasm
Applications	Immunohistochemistry (FFPE) : 1-2ug/ml Western Blot : 1-2ug/ml
Limitations	This recombinant CD3 epsilon antibody is available for research use only.



Western blot testing of human Jurkat cell lysate using recombinant CD3 epsilon antibody (clone C3e/4653R). Predicted molecular weight ~23 kDa.



IHC staining of FFPE human tonsil tissue with recombinant CD3e antibody (clone CD3e/4653R) at 2ug/ml. HIER: boil tissue sections in pH 9 10mM Tris with 1mM EDTA for 20 min and allow to cool before testing.



Negative control: IHC staining of FFPE human brain tissue using recombinant CD3 epsilon antibody (clone C3e/4653R) at 2ug/ml in PBS for 30min RT. HIER: boil tissue sections in pH 9 10mM Tris with 1mM EDTA for 20 min and allow to cool before testing.

Description

Cluster of differentiation 3 (CD3) is a multimeric protein complex, known historically as the T3 complex, and is composed of four distinct polypeptide chains: epsilon, gamma, delta and zeta. The CD3 complex serves as a T cell co-receptor that associates noncovalently with the T cell receptor (TCR). CD3 antigen appears at all stages of T cell development which makes it an ideal T cell marker for both the detection of normal T cells and T cell neoplasms (lymphomas and leukemias).

Application Notes

Optimal dilution of the recombinant CD3 epsilon antibody should be determined by the researcher.

Immunogen

A portion of amino acids 100-200 was used as the immunogen for the recombinant CD3 epsilon antibody.

Storage

Aliquot the recombinant CD3 epsilon antibody and store frozen at -20oC or colder. Avoid repeated freeze-thaw cycles.