

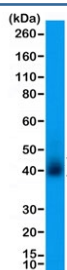
Recombinant CD28 Antibody [clone RM404] (R20420)

Catalog No.	Formulation	Size
R20420-0.1ML	Antibody in PBS with 50% glycerol, 1% BSA and 0.09% sodium azide	100 ul

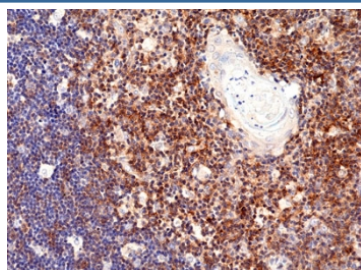
Recombinant **RABBIT MONOCLONAL**

[Bulk quote request](#)

Availability	1-3 business days
Species Reactivity	Human
Format	Purified
Host	Rabbit
Clonality	Recombinant Rabbit Monoclonal
Isotype	Rabbit IgG
Clone Name	RM404
Purity	Protein A purified from animal origin-free supernatant
UniProt	P10747
Localization	Cell surface
Applications	Immunohistochemistry (FFPE) : 1:100-1:200 Western Blot : 1:100-1:200
Limitations	This recombinant CD28 antibody is available for research use only.



Western blot testing of human T-cell lysate with recombinant CD28 antibody at 1:200 dilution. Expected molecular weight depending on level of glycosylation: ~25-44 kDa (monomer), ~50-90 kDa (dimer).



IHC staining of FFPE human thymus tissue with recombinant CD28 antibody at 1:200.

Description

This antibody reacts to human to CD28.

Application Notes

The stated application concentrations are suggested starting points. Titration of the recombinant CD28 antibody may be required due to differences in protocols and secondary/substrate sensitivity.

Immunogen

A peptide corresponding to residues near the C-terminus of human CD28 was used as the immunogen for the recombinant CD28 antibody.

Storage

Store the recombinant CD28 antibody at -20oC.