

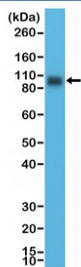
Recombinant CD276 Antibody / B7-H3 / Cytoplasmic domain [clone RM335] (R20359)

Catalog No.	Formulation	Size
R20359-0.1ML	Antibody in PBS with 50% glycerol, 1% BSA and 0.09% sodium azide	100 ul

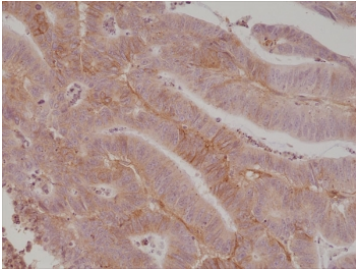
Recombinant **RABBIT MONOCLONAL**

[Bulk quote request](#)

Availability	1-3 business days
Species Reactivity	Human
Format	Purified
Host	Rabbit
Clonality	Recombinant Rabbit Monoclonal
Isotype	Rabbit IgG
Clone Name	RM335
Purity	Protein A purified from animal origin-free supernatant
UniProt	Q5ZPR3
Localization	Cell surface, cytoplasm
Applications	Immunohistochemistry (FFPE) : 1:500-1:1000 Western Blot : 1:5000-1:10000
Limitations	This recombinant CD276 antibody is available for research use only.



Western blot testing of human LNCaP cell lysate with recombinant CD276 antibody at 1:10,000 dilution. Expected molecular weight: 57-110 kDa depending on level of glycosylation.



IHC staining of FFPE human colon cancer tissue with recombinant CD276 antibody at 1:1000.

Description

This antibody reacts to the cytoplasmic domain of human CD276 (B7-H3).

Application Notes

The stated application concentrations are suggested starting points. Titration of the recombinant CD276 antibody may be required due to differences in protocols and secondary/substrate sensitivity.

Immunogen

A peptide corresponding to the C-terminus of human CD276 (B7-H3) was used as the immunogen for the recombinant CD276 antibody.

Storage

Store the recombinant CD276 antibody at -20°C.