

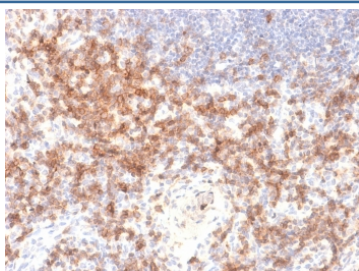
## Recombinant CD27 Antibody [clone LPFS2/2034R] (V3680)

Catalog No.	Formulation	Size
V3680-100UG	0.2 mg/ml in 1X PBS with 0.1 mg/ml BSA (US sourced) and 0.05% sodium azide	100 ug
V3680-20UG	0.2 mg/ml in 1X PBS with 0.1 mg/ml BSA (US sourced) and 0.05% sodium azide	20 ug
V3680SAF-100UG	1 mg/ml in 1X PBS; BSA free, sodium azide free	100 ug
V3680IHC-7ML	Prediluted in 1X PBS with 0.1 mg/ml BSA (US sourced) and 0.05% sodium azide; *For IHC use only*	7 ml

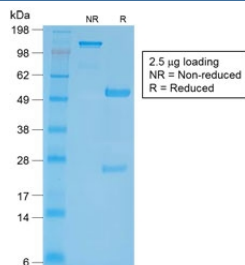
Recombinant **RABBIT MONOCLONAL**

[Bulk quote request](#)

<b>Availability</b>	1-3 business days
<b>Species Reactivity</b>	Human
<b>Format</b>	Purified
<b>Clonality</b>	Recombinant Rabbit Monoclonal
<b>Isotype</b>	Rabbit IgG, kappa
<b>Clone Name</b>	LPFS2/2034R
<b>Purity</b>	Protein A affinity chromatography
<b>UniProt</b>	P26842
<b>Localization</b>	Cell surface
<b>Applications</b>	Immunohistochemistry (FFPE) : 1-2ug/ml for 30 min at RT
<b>Limitations</b>	This recombinant CD27 antibody is available for research use only.



IHC testing of FFPE human lymph node with recombinant CD27 antibody (clone LPFS2/2034R). Required HIER: boil tissue sections in 10mM Tris buffer with 1mM EDTA, pH 9, for 10-20 min.



SDS-PAGE analysis of purified, BSA-free recombinant CD27 antibody (clone LPFS2/2034R) as confirmation of integrity and purity.

## Description

Recognizes a protein of a disulfide-linked 120kDa dimer, identified as CD27. It is expressed on the majority of peripheral T cells, medullary thymocytes, memory-type B cells, and natural killer cells. It is a transmembrane phosphoglycoprotein that belongs to the tumor necrosis factor receptor (TNFR) superfamily. CD27 binds to its ligand CD70, a member of the TNF family, and induces T-cell co-stimulation and B-cell activation. It also interacts with TRAFs and is involved in activation of NFkB and SAPK/JNK and induces apoptosis.

## Application Notes

Optimal dilution of the recombinant CD27 antibody should be determined by the researcher.

1. The prediluted format is supplied in a dropper bottle and is optimized for use in IHC. After epitope retrieval step (if required), drip mAb solution onto the tissue section and incubate at RT for 30 min.

## Immunogen

Human CD27 protein was used as the immunogen for the recombinant CD27 antibody.

## Storage

Store the recombinant CD27 antibody at 2-8°C (with azide) or aliquot and store at -20°C or colder (without azide).