

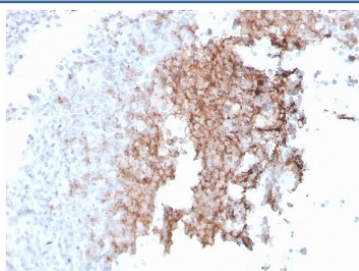
## Recombinant CD21 Antibody [clone rCR2/1952] (V7692)

Catalog No.	Formulation	Size
V7692-100UG	0.2 mg/ml in 1X PBS with 0.1 mg/ml BSA (US sourced) and 0.05% sodium azide	100 ug
V7692-20UG	0.2 mg/ml in 1X PBS with 0.1 mg/ml BSA (US sourced) and 0.05% sodium azide	20 ug
V7692SAF-100UG	1 mg/ml in 1X PBS; BSA free, sodium azide free	100 ug

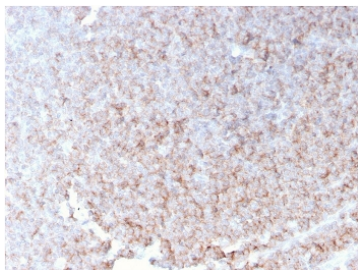
Recombinant **MOUSE MONOCLONAL**

[Bulk quote request](#)

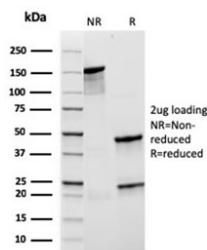
<b>Availability</b>	1-3 business days
<b>Species Reactivity</b>	Human
<b>Format</b>	Purified
<b>Clonality</b>	Recombinant Mouse Monoclonal
<b>Isotype</b>	Mouse IgG1, kappa
<b>Clone Name</b>	rCR2/1952
<b>Purity</b>	Protein G affinity chromatography
<b>UniProt</b>	P20023
<b>Localization</b>	Cell surface
<b>Applications</b>	Immunohistochemistry (FFPE) : 1-2ug/ml
<b>Limitations</b>	This recombinant CD21 antibody is available for research use only.



IHC staining of FFPE human spleen with recombinant CD21 antibody (clone rCR2/1952). HIER: boil tissue sections in pH 9 10mM Tris with 1mM EDTA for 10-20 min and allow to cool before testing.



IHC staining of FFPE human spleen with recombinant CD21 antibody (clone rCR2/1952). HIER: boil tissue sections in pH 9 10mM Tris with 1mM EDTA for 10-20 min and allow to cool before testing.



SDS-PAGE analysis of purified, BSA-free recombinant CD21 antibody (clone rCR2/1952) as confirmation of integrity and purity.

## Description

Recognizes a protein of 140kDa, which is identified as the complement receptor 2 (CR2) or CD21. This protein is expressed strongly on mature B cells, follicular dendritic cells and weakly on immature thymocytes and T lymphocytes. In B-cell ontogeny, CD21 appears after the pre-B-stage, is maintained during peripheral B-cell development and is lost upon terminal differentiation into plasma cells. CD21 expression is also gradually lost after stimulation of B cells in vitro. CD21 functions as receptor for C3d, C3dg and iC3b Complement components, for EBV and for IFNalpha. CD21 binds to CD23 and associates with CD19, CD81 and Leu13 to form a large signal-transduction complex involved in B cell activation.

## Application Notes

Optimal dilution of the recombinant CD21 antibody should be determined by the researcher.

## Immunogen

A partial protein corresponding to amino acids 44-196 was used as the immunogen for the recombinant CD21 antibody.

## Storage

Store the recombinant CD21 antibody at 2-8oC (with azide) or aliquot and store at -20oC or colder (without azide).