

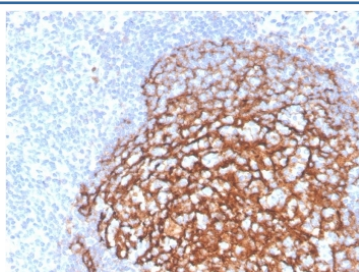
Recombinant CD21 Antibody [clone CR2/3990R] (V9551)

Catalog No.	Formulation	Size
V9551-100UG	0.2 mg/ml in 1X PBS with 0.1 mg/ml BSA (US sourced), 0.05% sodium azide	100 ug
V9551-20UG	0.2 mg/ml in 1X PBS with 0.1 mg/ml BSA (US sourced), 0.05% sodium azide	20 ug
V9551SAF-100UG	1 mg/ml in 1X PBS; BSA free, sodium azide free	100 ug

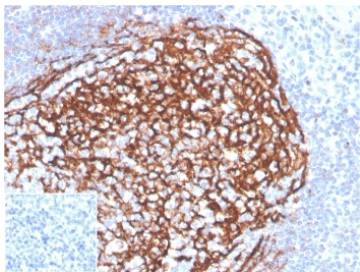
Recombinant **RABBIT MONOCLONAL**

[Bulk quote request](#)

Availability	1-3 business days
Species Reactivity	Human
Format	Purified
Clonality	Recombinant Rabbit Monoclonal
Isotype	Rabbit IgG
Clone Name	CR2/3990R
Purity	Protein A/G affinity
UniProt	P20023
Localization	Cell Surface
Applications	Immunohistochemistry (FFPE) : 1-2ug/ml
Limitations	This recombinant CD21 antibody is available for research use only.



IHC staining of FFPE human tonsil tissue with recombinant CD21 antibody (clone CR2/3990R). HIER: boil tissue sections in pH 9 10mM Tris with 1mM EDTA for 20 min and allow to cool before testing.



IHC staining of FFPE human tonsil tissue with recombinant CD21 antibody (clone CR2/3990R). Negative control inset: PBS instead of primary antibody to control for secondary binding. HIER: boil tissue sections in pH 9 10mM Tris with 1mM EDTA for 20 min and allow to cool before testing.

Description

CD21 also known as complement C3d receptor, Epstein-Barr virus receptor, and complement receptor type 2 (CR2), is a protein that in humans is encoded by the CR2 gene. This protein is involved in the complement system. It binds to iC3b (inactive derivative of C3b), C3dg, or C3d. B cells have CR2 receptors on their surfaces, allowing the complement system to play a role in B-cell activation and maturation. It is expressed by follicular dendritic cells (FDC) and mature B cells, as well as by several types of epithelial cells. CD21 is useful in the identification of follicular dendritic cell matrix found in normal lymph node and tonsillar tissue, and also useful in identifying abnormal.

Application Notes

Optimal dilution of the recombinant CD21 antibody should be determined by the researcher.

Immunogen

A portion of amino acids 933-C terminal of CD21 protein was used as the immunogen for the recombinant CD21 antibody.

Storage

Aliquot the recombinant CD21 antibody and store frozen at -20°C or colder. Avoid repeated freeze-thaw cycles.