

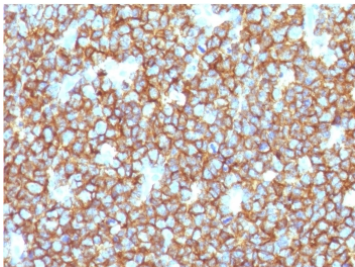
Recombinant CD20 Antibody / Rabbit Monoclonal [clone RMC20-1] (V7239)

Catalog No.	Formulation	Size
V7239-100UG	0.2 mg/ml in 1X PBS with 0.1 mg/ml BSA (US sourced) and 0.05% sodium azide	100 ug
V7239-20UG	0.2 mg/ml in 1X PBS with 0.1 mg/ml BSA (US sourced) and 0.05% sodium azide	20 ug
V7239SAF-100UG	1 mg/ml in 1X PBS; BSA free, sodium azide free	100 ug
V7239IHC-7ML	Prediluted in 1X PBS with 0.1 mg/ml BSA (US sourced) and 0.05% sodium azide; *For IHC use only*	7 ml

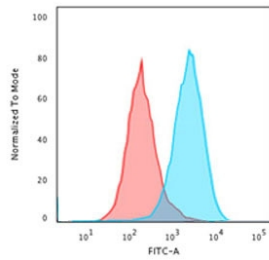
Recombinant **RABBIT MONOCLONAL**

[Bulk quote request](#)

Availability	1-3 business days
Species Reactivity	Human
Format	Purified
Host	Rabbit
Clonality	Recombinant Rabbit Monoclonal
Isotype	Rabbit IgG, kappa
Clone Name	RMC20-1
Purity	Protein A affinity chromatography
UniProt	P11836
Localization	Predominantly cell surface with some cytoplasmic
Applications	Flow Cytometry : 1-2ug/10 ⁶ cells Immunohistochemistry (FFPE) : 1-2ug/ml for 30 min at RT Prediluted IHC Only Format : incubate for 30 min at RT (1)
Limitations	This recombinant CD20 antibody is available for research use only.



IHC testing of recombinant CD20 antibody and FFPE human tonsil tissue. HIER: steam section in pH 9 10mM Tris with 1mM EDTA for 20 min.



Flow cytometry testing of human Raji cells with recombinant CD20 antibody (clone RMC20-1); Red=isotype control, Blue= recombinant CD20 antibody.

Description

CD20 is expressed on all stages of B cell development except the first and last; it is present from late pro-B cells through memory cells, but not on either early pro-B cells or plasma blasts and plasma cells. It has no known natural ligand and its function is to enable optimal B-cell immune response, specifically against T-independent antigens. It is suspected that it acts as a calcium channel in the cell membrane. It has been shown that CD20 plays a role in the microenvironmental interactions of B cells. [Wiki]

Application Notes

Titering of the recombinant CD20 antibody may be required for optimal performance.

1. The prediluted format is supplied in a dropper bottle and is optimized for use in IHC. After epitope retrieval step (if required), drip mAb solution onto the tissue section and incubate at RT for 30 min.

Immunogen

Full length human CD20 protein was used as the immunogen for this recombinant CD20 antibody.

Storage

Recombinant CD20 antibody with azide can be stored at 2-8°C. The azide-free format should be aliquoted and stored at -20°C or colder.