

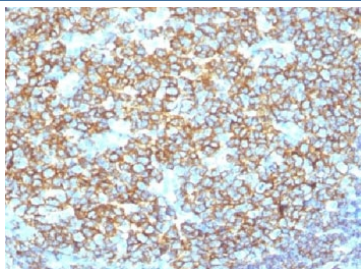
## Recombinant CD20 Antibody / Rabbit Monoclonal [clone IGEL/1497R] (V7238)

Catalog No.	Formulation	Size
V7238-100UG	0.2 mg/ml in 1X PBS with 0.1 mg/ml BSA (US sourced) and 0.05% sodium azide	100 ug
V7238-20UG	0.2 mg/ml in 1X PBS with 0.1 mg/ml BSA (US sourced) and 0.05% sodium azide	20 ug
V7238SAF-100UG	1 mg/ml in 1X PBS; BSA free, sodium azide free	100 ug
V7238IHC-7ML	Prediluted in 1X PBS with 0.1 mg/ml BSA (US sourced) and 0.05% sodium azide; *For IHC use only*	7 ml

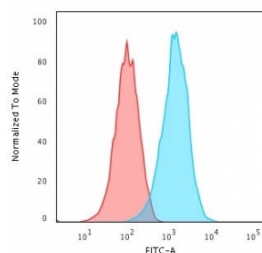
Recombinant **RABBIT MONOCLONAL**

[Bulk quote request](#)

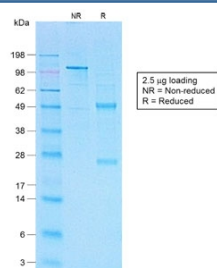
Availability	1-3 business days
Species Reactivity	Human
Format	Purified
Host	Rabbit
Clonality	Recombinant Rabbit Monoclonal
Isotype	Rabbit IgG, kappa
Clone Name	IGEL/1497R
Purity	Protein A affinity chromatography
UniProt	P11836
Localization	Predominantly cell surface with some cytoplasmic
Applications	Flow Cytometry : 1-2ug/10 <sup>6</sup> cells Immunohistochemistry (FFPE) : 1-2ug/ml for 30 min at RT
Limitations	This recombinant CD20 antibody is available for research use only.



IHC testing of recombinant CD20 antibody and FFPE human tonsil tissue. Required HIER: steam section in pH 9 10mM Tris with 1mM EDTA for 20 min.



Flow cytometry testing of human Raji cells with recombinant CD20 antibody (clone IGEL/1497R); Red=isotype control, Blue= recombinant CD20 antibody.



SDS-PAGE analysis of purified, BSA-free recombinant CD20 antibody (clone IGEL/1497R) as confirmation of integrity and purity.

## Description

CD20 is a non-Ig differentiation antigen of B-cells and its expression is restricted to normal and neoplastic B-cells, being absent from all other leukocytes and tissues. It is expressed by pre B-cells and persists during all stages of maturation but is lost upon terminal differentiation into plasma cells.

## Application Notes

Titering of the recombinant CD20 antibody may be required for optimal performance.

1. The prediluted format is supplied in a dropper bottle and is optimized for use in IHC. After epitope retrieval step (if required), drip mAb solution onto the tissue section and incubate at RT for 30 min.

## Immunogen

Full length human CD20 protein was used as the immunogen for this recombinant CD20 antibody.

## Storage

Recombinant CD20 antibody with azide can be stored at 2-8°C. The azide-free format should be aliquoted and stored at -20°C or colder.