

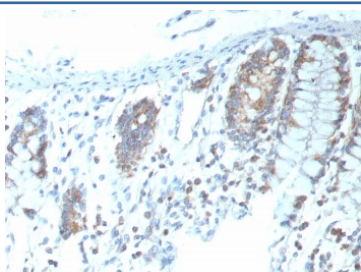
Recombinant CD151 Antibody [clone CD151/9297R] (V5557)

Catalog No.	Formulation	Size
V5557-100UG	0.2 mg/ml in 1X PBS with 0.1 mg/ml BSA (US sourced), 0.05% sodium azide	100 ug
V5557-20UG	0.2 mg/ml in 1X PBS with 0.1 mg/ml BSA (US sourced), 0.05% sodium azide	20 ug
V5557SAF-100UG	1 mg/ml in 1X PBS; BSA free, sodium azide free	100 ug

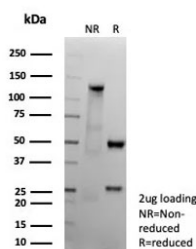
Recombinant **RABBIT MONOCLONAL**

[Bulk quote request](#)

Availability	1-3 business days
Species Reactivity	Human
Format	Purified
Clonality	Recombinant Rabbit Monoclonal
Isotype	Rabbit IgG, kappa
Clone Name	CD151/9297R
Purity	Protein A/G affinity
UniProt	P48509
Localization	Cell membrane
Applications	Immunohistochemistry (FFPE) : 1-2ug/ml
Limitations	This recombinant CD151 antibody is available for research use only.



IHC staining of FFPE human colon tissue with recombinant CD151 antibody (clone CD151/9297R). HIER: boil tissue sections in pH 9 10mM Tris with 1mM EDTA for 20 min and allow to cool before testing.



SDS-PAGE analysis of purified, BSA-free recombinant CD151 antibody (clone CD151/9297R) as confirmation of integrity and purity.

Description

CD151 is involved in a wide variety of cell biological processes, including cell adhesion and the transport of integrins via vesicles. The human CD151 gene maps to chromosome 11p15.5 and encodes a 253 amino acid protein, which belongs to the tetraspan (4TM) superfamily. CD151 can associate with several integrin chains including beta1, beta3, beta4, alpha2, alpha3, alpha5 and alpha6 integrins. CD151 may provide a framework for the spatial organization of both type I and type II hemidesmosomes, which are specialized junctional complexes that function as cell attachment sites for binding to basement membranes. CD151 RNA transcript (1.6 kb) can be detected in MO7e cells, bone marrow stromal cells, C11 endothelial cells, HUVEC and several myeloid leukemia cell lines, however, no transcript is detected in brain and the lymphoblastoid cell lines MOLT-4 and BALM-1. Leu 149-Glu 213 of CD151 is the interface through which Integrin alpha3/beta1 can bind. CD151 can enhance cell motility, invasion and metastasis of cancer cells in a focal adhesion kinase dependent manner.

Application Notes

Optimal dilution of the recombinant CD151 antibody should be determined by the researcher.

Immunogen

Recombinant full-length human CD151 protein was used as the immunogen for the recombinant CD151 antibody.

Storage

Aliquot the recombinant CD151 antibody and store frozen at -20oC or colder. Avoid repeated freeze-thaw cycles.