

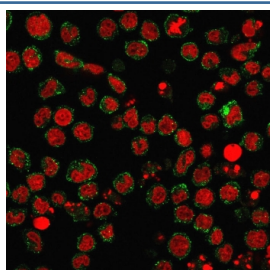
Recombinant CD15 Antibody [clone FUT4/1478R] (V7257)

Catalog No.	Formulation	Size
V7257-100UG	0.2 mg/ml in 1X PBS with 0.1 mg/ml BSA (US sourced) and 0.05% sodium azide	100 ug
V7257-20UG	0.2 mg/ml in 1X PBS with 0.1 mg/ml BSA (US sourced) and 0.05% sodium azide	20 ug
V7257SAF-100UG	1 mg/ml in 1X PBS; BSA free, sodium azide free	100 ug
V7257IHC-7ML	Prediluted in 1X PBS with 0.1 mg/ml BSA (US sourced) and 0.05% sodium azide; *For IHC use only*	7 ml

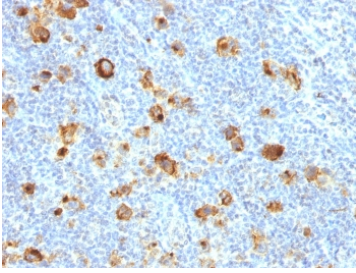
Recombinant **RABBIT MONOCLONAL**

[Bulk quote request](#)

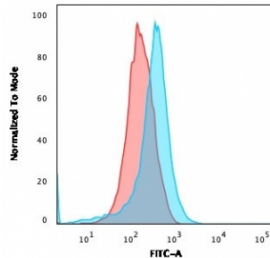
Availability	1-3 business days
Species Reactivity	Human, Mouse, Rat
Format	Purified
Host	Rabbit
Clonality	Recombinant Rabbit Monoclonal
Isotype	Rabbit IgG, kappa
Clone Name	FUT4/1478R
Purity	Protein A affinity
UniProt	P22083
Localization	Cytoplasmic and cell surface
Applications	Flow Cytometry : 0.5-1ug/million cells Immunofluorescence : 1-2ug/ml Immunohistochemistry (FFPE) : 0.5-1ug/ml for 30 min at RT
Limitations	This recombinant CD15 antibody is available for research use only.



Immunofluorescent staining of human U937 cells with recombinant CD15 antibody (clone FUT4/1478R, green) and Reddot nuclear stain (red).



IHC testing of FFPE human Hodgkin's lymphoma and recombinant CD15 antibody (clone FUT4/1478R). Required HIER: steam sections in 10mM Tris with 1mM EDTA, pH 9.0, for 10-20 min.



FACS analysis of human U937 cells using recombinant CD15 antibody (clone FUT4/1478R, blue) and isotype control (red).

Description

CD15 plays a role in mediating phagocytosis, bactericidal activity, and chemotaxis. It is present on >95% of granulocytes including neutrophils and eosinophils and to a lesser degree on monocytes. In addition, CD15 is expressed in Reed-Sternberg cells and some epithelial cells. CD15 antibody is very useful in the identification of Hodgkin's disease. CD15 is occasionally expressed in large cell lymphomas of both B and T phenotypes which otherwise have a quite distinct histological appearance.

Application Notes

Optimal dilution of the recombinant CD15 antibody should be determined by the researcher.

1. The prediluted format is supplied in a dropper bottle and is optimized for use in IHC. After epitope retrieval step (if required), drip mAb solution onto the tissue section and incubate at RT for 30 min.

Immunogen

Purified human neutrophils were used as the immunogen for the recombinant CD15 antibody.

Storage

Store the recombinant CD15 antibody cocktail at 2-8°C (with azide) or aliquot and store at -20°C or colder (without azide).

