

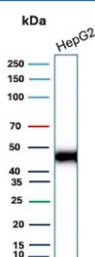
## Recombinant CD147 Antibody / Basigin / Emmprin [clone BSG/9223R] (V5540)

Catalog No.	Formulation	Size
V5540-100UG	0.2 mg/ml in 1X PBS with 0.1 mg/ml BSA (US sourced), 0.05% sodium azide	100 ug
V5540-20UG	0.2 mg/ml in 1X PBS with 0.1 mg/ml BSA (US sourced), 0.05% sodium azide	20 ug
V5540SAF-100UG	1 mg/ml in 1X PBS; BSA free, sodium azide free	100 ug

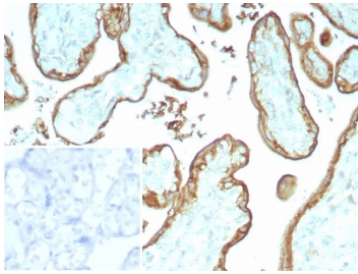
Recombinant **RABBIT MONOCLONAL**

[Bulk quote request](#)

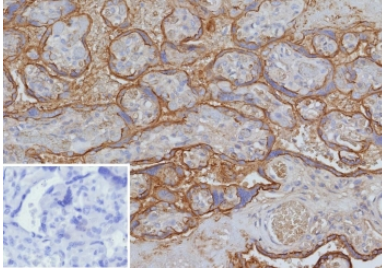
<b>Availability</b>	1-3 business days
<b>Species Reactivity</b>	Human
<b>Format</b>	Purified
<b>Clonality</b>	Recombinant Rabbit Monoclonal
<b>Isotype</b>	Rabbit IgG, kappa
<b>Clone Name</b>	BSG/9223R
<b>Purity</b>	Protein A/G affinity
<b>UniProt</b>	P35613
<b>Localization</b>	Cell membrane
<b>Applications</b>	Immunohistochemistry (FFPE) : 1-2ug/ml Western Blot : 2-4ug/ml
<b>Limitations</b>	This recombinant CD147 antibody is available for research use only.



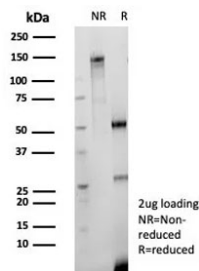
Western blot testing of human HepG2 cell lysate with recombinant CD147 antibody (clone BSG/9223R). Expected molecular weight: 27-66 kDa depending on level of glycosylation.



IHC staining of FFPE human placenta tissue with recombinant CD147 antibody (clone BSG/9223R). Inset: PBS used in place of primary Ab (secondary Ab negative control).  
HIER: boil tissue sections in pH 9 10mM Tris with 1mM EDTA for 20 min and allow to cool before testing.



IHC staining of FFPE human placenta tissue with recombinant CD147 antibody (clone BSG/9223R). Inset: PBS used in place of primary Ab (secondary Ab negative control).  
HIER: boil tissue sections in pH 9 10mM Tris with 1mM EDTA for 20 min and allow to cool before testing.



SDS-PAGE Analysis recombinant CD147 antibody (clone BSG/9223R) as confirmation of integrity and purity.

## Description

CD147 is important in spermatogenesis, embryo implantation, neural network formation, and tumor progression. It stimulates the production of interstitial collagenase, gelatinase A, stromelysin-1 and various metalloproteinases (MMPs) by fibroblasts. These enzymes are important factors in cancer invasion and metastasis.

## Application Notes

Optimal dilution of the recombinant CD147 antibody should be determined by the researcher.

## Immunogen

Recombinant full-length human BSG protein was used as the immunogen for the recombinant CD147 antibody.

## Storage

Aliquot the recombinant CD147 antibody and store frozen at -20°C or colder. Avoid repeated freeze-thaw cycles.